

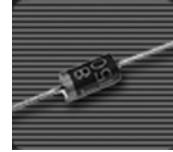


# HER201G thru HER208G

Glass Passivated High Efficient Rectifiers  
Reverse Voltage 50 to 1000 Volts Forward Current 2.0 Amperes

## Features

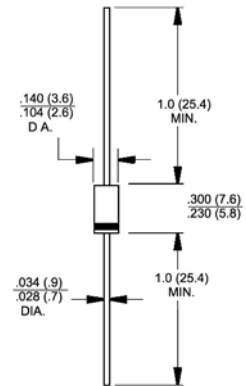
- ◆ Low forward voltage drop
- ◆ High current capability
- ◆ High reliability
- ◆ High surge current capability



DO-204AC (DO-15)

## Mechanical Data

- ◆ Case: Molded plastic DO-204AC(DO-15)
- ◆ Epoxy: UL 94V-O rate flame retardant
- ◆ Lead: Axial leads, solderable per MIL-STD-202, Method 208 guaranteed
- ◆ Polarity: Color band denotes cathode end
- ◆ High temperature soldering guaranteed:  
250°C/10 seconds .375" (9.5mm) lead lengths at 5 lbs., (2.3kg) tension
- ◆ Mounting position: Any
- ◆ Weight: 0.014 ounce, 0.395 gram



Dimensions in inches and (millimeters)

## Maximum Ratings and Electrical Characteristics

Ratings at 25°C ambient temperature unless otherwise specified.

Single phase, half wave, 60Hz, resistive or inductive load.

For capacitive load, derate current by 20%

Parameter	Symbols	HER 201G	HER 202G	HER 203G	HER 204G	HER 205G	HER 206G	HER 207G	HER 208G	Units	
Maximum repetitive peak reverse voltage	$V_{RRM}$	50	100	200	300	400	600	800	1000	Volts	
Maximum RMS voltage	$V_{RMS}$	35	70	140	210	280	420	560	700	Volts	
Maximum DC blocking voltage	$V_{DC}$	50	100	200	300	400	600	800	1000	Volts	
Maximum average forward rectified current .375" (9.5mm) lead length @ $T_A=55^\circ\text{C}$	$I_{F(AV)}$	2.0								Amps	
Peak forward surge current, 8.3ms single half sine-wave superimposed on rated load (JEDEC Method)	$I_{FSM}$	60.0								Amps	
Maximum instantaneous forward voltage @ 2.0A	$V_F$	1.0			1.3		1.7			Volts	
Maximum DC reverse current @ $T_A=25^\circ\text{C}$ at rated DC blocking voltage @ $T_A=125^\circ\text{C}$	$I_R$	5.0				150					$\mu\text{A}$ $\mu\text{A}$
Maximum reverse recovery time (Note 1)	$t_{rr}$	50				75				nS	
Typical junction capacitance (Note 2)	$C_j$	50				30				pF	
Operating junction temperature range	$T_J$	-55 to +150								°C	
Storage temperature range	$T_{STG}$	-55 to +150								°C	

- Notes:**
- Reverse Recovery Test Conditions:  $I_F=0.5\text{A}$ ,  $I_R=1.0\text{A}$ ,  $I_{RR}=0.25\text{A}$
  - Measured at 1 MHz and Applied Reverse Voltage of 4.0 V D.C.

# RATINGS AND CHARACTERISTIC CURVES

FIG.1- REVERSE RECOVERY TIME CHARACTERISTIC AND TEST CIRCUIT DIAGRAM

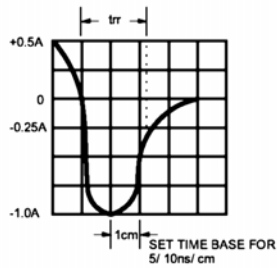
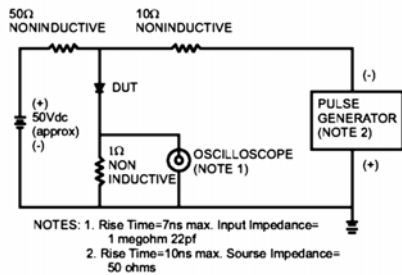


FIG.2- MAXIMUM FORWARD CURRENT DERATING CURVE

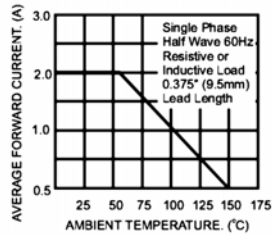


FIG.3- TYPICAL REVERSE CHARACTERISTICS

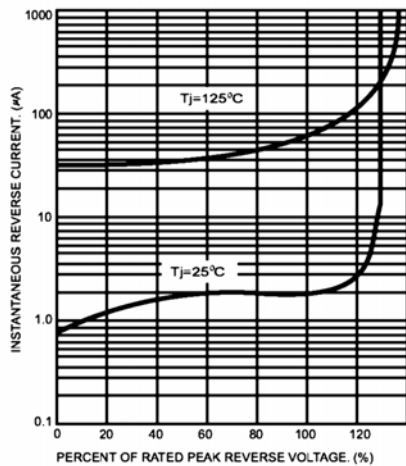


FIG.4- TYPICAL FORWARD CHARACTERISTICS

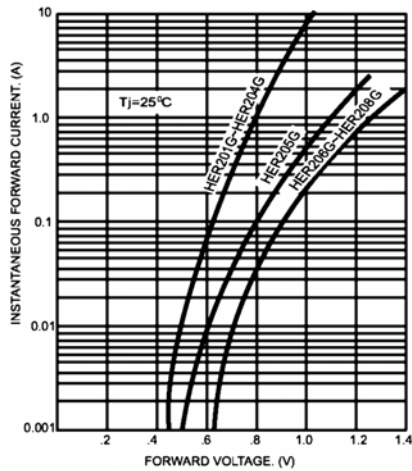


FIG.5- MAXIMUM NON-REPETITIVE FORWARD SURGE CURRENT

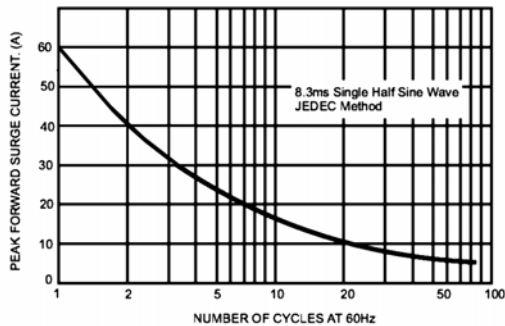


FIG.6- TYPICAL JUNCTION CAPACITANCE

