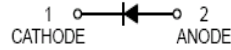
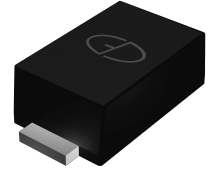


Features

- Surface mount package ideally suited for automatic insertion
- For general purpose switching applications



Schematic Diagram



SOD-123

Absolute Maximum Ratings ($T_A=25^\circ\text{C}$ unless otherwise noted)

Characteristic	Symbol	Value	Unit
Continuous Reverse Voltage	V_R	250	V
Forward Continuous Current	I_F	200	mA
Peak Forward Surge Current	I_{FSM}	625	mA
Power Dissipation	P_D	400	mW
Thermal Resistance, Junction to Case	$R_{\theta JL}$	174	$^\circ\text{C}/\text{W}$
Thermal Resistance, Junction to Ambient	$R_{\theta JA}$	492	$^\circ\text{C}/\text{W}$
Operating and Storage Temperature Range	T_J, T_{STG}	-55 to +150	$^\circ\text{C}$

Electrical Characteristics ($T_A=25^\circ\text{C}$ unless otherwise noted)

Characteristic	Symbol	Min	Max	Unit	Test Condition
Reverse Breakdown Voltage	$V_{(BR)R}$	250	--	V	$I_R=100\mu\text{A}$
Forward Voltage	V_F	-	1.0 1.25	V	$I_F=100\text{mA}$ $I_F=200\text{mA}$
Reverse Current	I_R	-	1 100	μA μA	$V_R=200\text{V}$ $V_R=200\text{V}, T_J=150^\circ\text{C}$
Diode Capacitance	C_D	-	5.0	pF	$V_R=0, f=1.0\text{MHz}$
Reverse Recovery Time	t_{rr}	-	50	ns	$I_F=I_R=30\text{mA}, R_L=100\Omega$

Typical Electrical Characteristic Curves

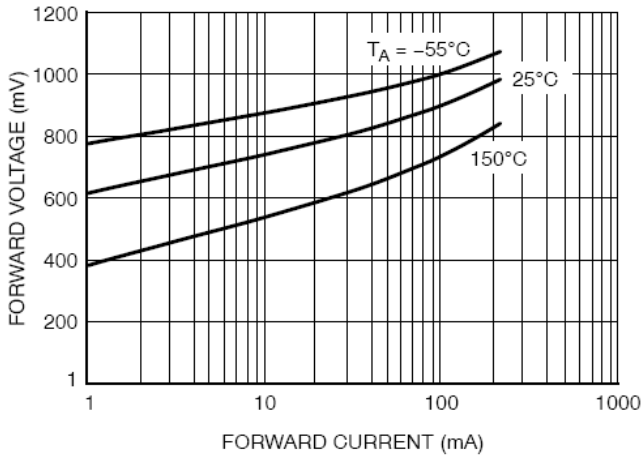


Figure 1. Forward Voltage

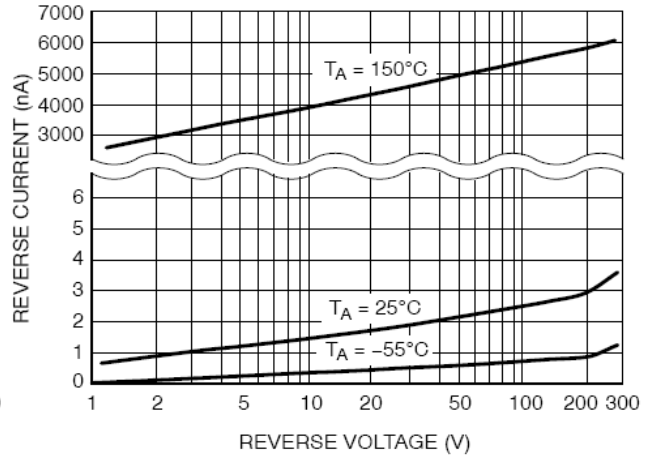


Figure 2. Reverse Leakage

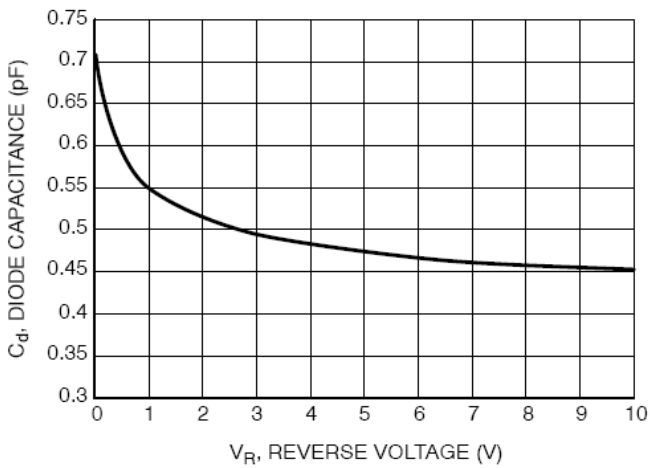
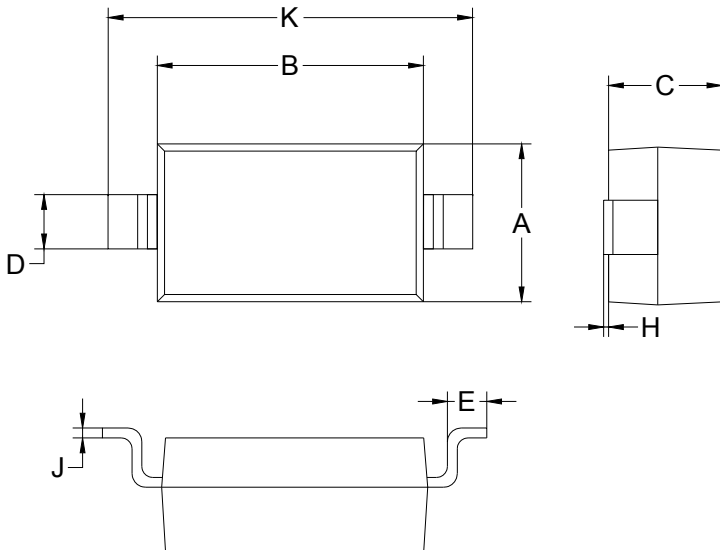


Figure 3. Diode Capacitance

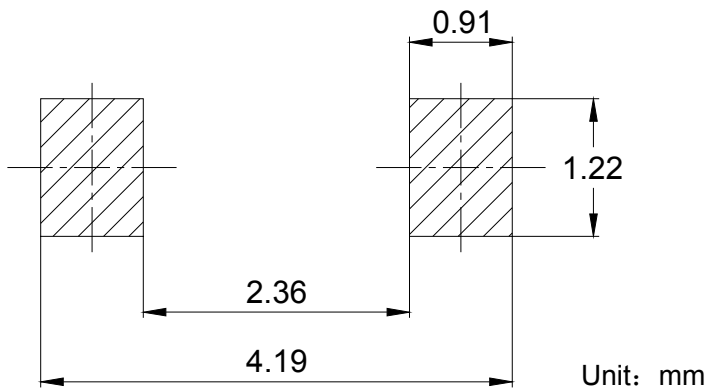
Package Outline Dimensions

SOD-123



SOD-123		
Dim	Min	Max
A	1.45	1.75
B	2.55	2.85
C	1.15 Typical	
D	0.55 Typical	
E	0.25	0.45
H	0.02	0.10
J	0.1 Typical	
K	3.55	3.85
All Dimensions in mm		

Soldering Footprint



Ordering Information

Device	Package	Marking	Quantity	HSF Status
GSMMSD103	SOD-123	JS	3000pcs / Reel	RoHS Compliant