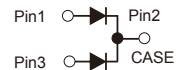
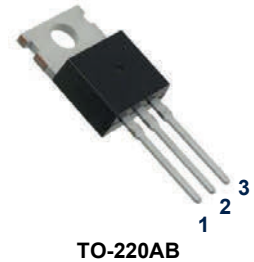


Features

- Plastic package has underwriters laboratory flammability classification 94V-0
- Metal silicon junction, majority carrier conduction
- Guard ring for over voltage protection
- Low power loss, high efficiency
- High current capability, low forward voltage drop
- Dual rectifiers
- High surge capability
- For use in low voltage, high frequency inverters, free wheeling, and polarity protection applications
- High temperature soldering guaranteed: 260°C/10 seconds, 0.25" (6.35mm) from case
- Component in accordance to RoHS 2011/65/EU



Schematic Diagram

Mechanical Data

- Case: JEDEC TO-220AB molded plastic body
- Terminals: Lead solderable per MIL-STD-750, method 2026
- Polarity: As marked
- Mounting position: Any

Maximum Ratings and Electrical Characteristics (Ratings at 25°C ambient temperature unless otherwise specified, Single phase, half wave, resistive or inductive load. For capacitive load, derate by 20%.)

Parameters	Symbols	Value	Units
Maximum Repetitive Peak Reverse Voltage	V_{RRM}	60	V
Maximum RMS Voltage	V_{RMS}	42	V
Maximum DC Blocking Voltage	V_{DC}	60	V
Maximum Average Forward Rectified Current See Fig.1	Per leg	20.0	A
	Total device	40.0	
Peak Forward Surge Current 8.3ms Single Half Sine-Wave Superimposed on Rated Load (JEDEC Method)	I_{FSM}	300.0	A
Maximum Instantaneous Forward Voltage at 20.0A	V_F	0.75	V
Maximum Instantaneous Reverse Current at Rated DC Blocking Voltage ¹	$T_A=25^{\circ}C$	100	μA
	$T_A=100^{\circ}C$	5	mA
	$T_A=125^{\circ}C$	-	
Typical Thermal Resistance, Junction-Case	$R_{\theta JC}$	1.5	$^{\circ}C/W$
Operating Junction Temperature Range	T_J	-55 to +150	$^{\circ}C$
Storage Temperature Range	T_{STG}	-55 to +150	$^{\circ}C$

Notes:

1. Pulse test: 300 μs pulse width, 1% duty cycle

Ratings and Characteristics Curves

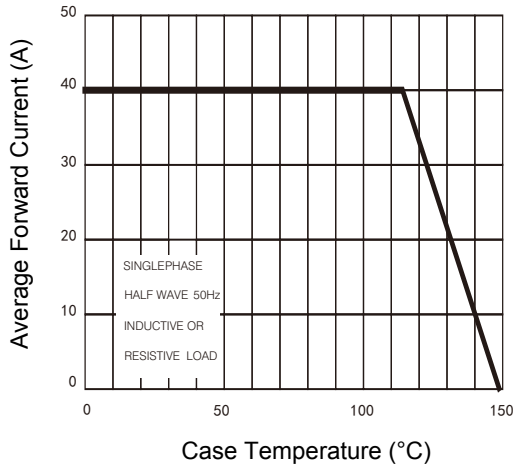


Figure 1. Forward Current Derating Curve

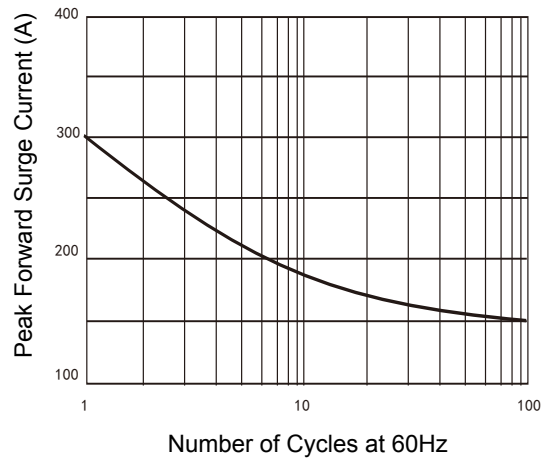


Figure 2. Maximum Non-Repetitive Peak Forward Surge Current

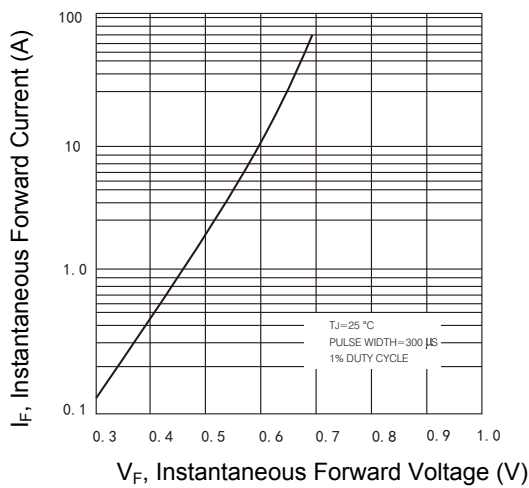


Figure 3. Typical Instantaneous Forward Characteristics

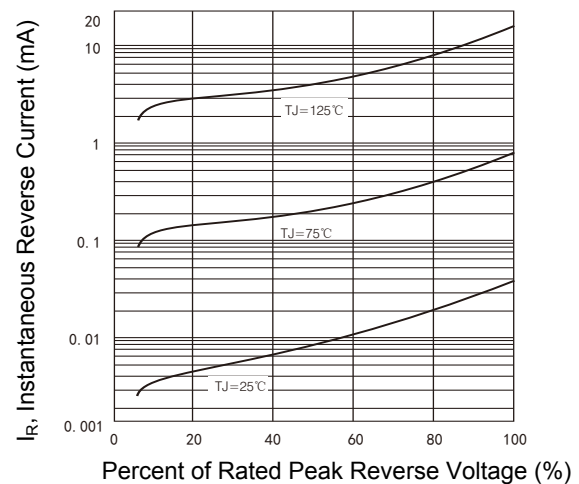
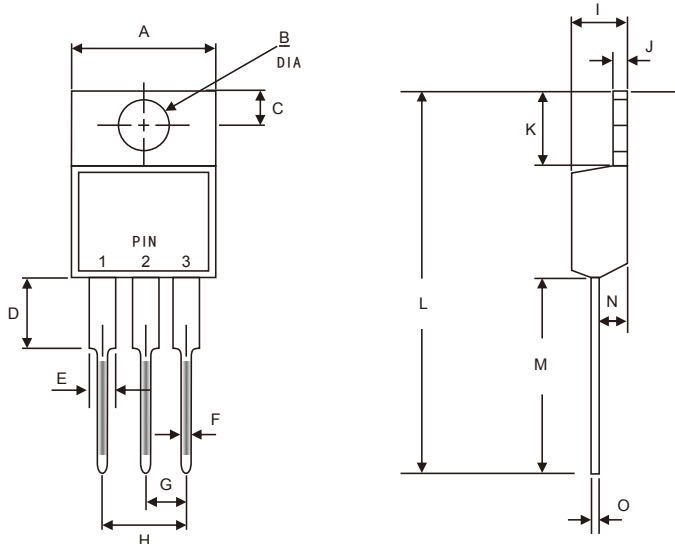


Figure 4. Typical Reverse Characteristics

Package Outline Dimensions (TO-220AB)



Symbol	Dimensions In Millimeters		Dimensions In Inches	
	Min.	Max.	Min.	Max.
A	9.91	10.41	0.390	0.410
B	3.74	4.10	0.147	0.161
C	2.60	2.90	0.102	0.114
D	3.50	4.20	0.138	0.165
E	1.20	1.42	0.047	0.056
F	0.68	0.94	0.027	0.037
G	2.41	2.67	0.095	0.105
H	4.88	5.28	0.192	0.208
I	4.44	4.70	0.175	0.185
J	1.14	1.39	0.045	0.055
K	6.20	7.20	0.244	0.283
L	28.10	29.50	1.106	1.161
M	13.10	14.22	0.516	0.560
N	2.50	2.90	0.098	0.114
O	0.35	0.58	0.014	0.023

Order Information

Device	Package	Marking	Carrier	Quantity
GSR4060CT	TO-220AB	SR4060CT	Tube	50pcs / Tube