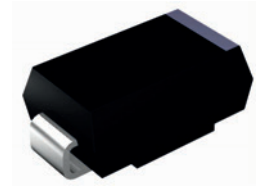


## Features

- Low forward voltage drop
- High junction temperature
- Moisture sensitivity: level 1, per J-STD-020
- Plastic package has Underwriters Laboratory Flammability Classification 94V-0
- Halogen-free according to IEC 61249-2-21 definition



DO-214AA (SMB)

## Applications

For use in low voltage, high frequency inverters, free wheeling and polarity protection applications.

## Maximum Ratings (T<sub>A</sub>=25°C unless otherwise specified)

Parameter	Symbol	GSK27	GSK28	GSK29	GSK2B	Unit
Maximum Repetitive Peak Reverse Voltage	V <sub>RRM</sub>	70	80	90	100	V
Maximum RMS Voltage	V <sub>RMS</sub>	42	56	63	70	V
Maximum DC Blocking Voltage	V <sub>DC</sub>	70	80	90	100	V
Maximum Average Forward Rectified Current	I <sub>F(AV)</sub>	2				A
Peak Forward Surge Current (8.3ms Single Half Sine-Wave Superimposed on Rated Load)	I <sub>FSM</sub>	50				A
Typical Thermal Resistance, Junction to Ambient <sup>1</sup>	R <sub>θJA</sub>	75				°C/W
Typical Thermal Resistance, Junction to Case <sup>1</sup>	R <sub>θJC</sub>	30				
Typical Thermal Resistance, Junction to Lead <sup>1</sup>	R <sub>θJL</sub>	15				
Operating Junction and Storage Temperature Range	T <sub>J</sub> , T <sub>STG</sub>	-55 to +150				°C

Note:

1. Thermal resistance from junction to lead, mounted on PCB with 8.0×8.0mm copper pads.

## Electrical Characteristics (T<sub>A</sub>=25°C unless otherwise noted)

Parameter	Symbol	Test Conditions	Value	Unit
Maximum Instantaneous Forward Voltage	V <sub>F</sub>	I <sub>F</sub> =2A	0.79	V
Maximum DC Reverse Current at Rated DC Blocking Voltage	I <sub>R</sub>	T <sub>A</sub> =25°C	30	μA
		T <sub>A</sub> =125°C	2000	
Typical Junction Capacitance	C <sub>J</sub>	4.0V, 1MHz	200	pF

## Ratings and Characteristics Curves ( $T_A=25^\circ\text{C}$ unless otherwise noted)

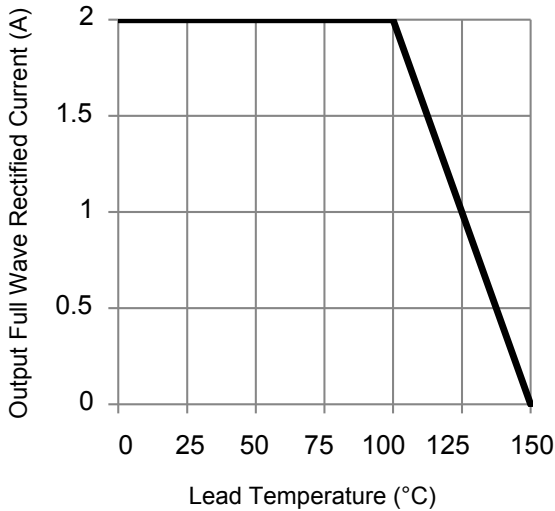


Figure 1. Forward Current Derating Curve

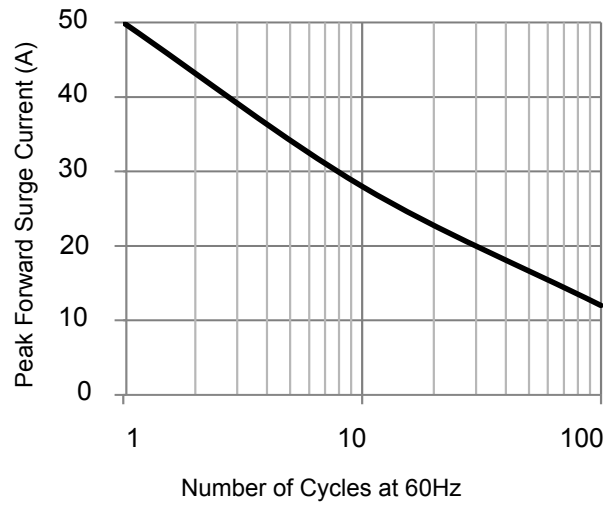


Figure 2. Maximum Non-Repetitive Peak Forward Surge Current

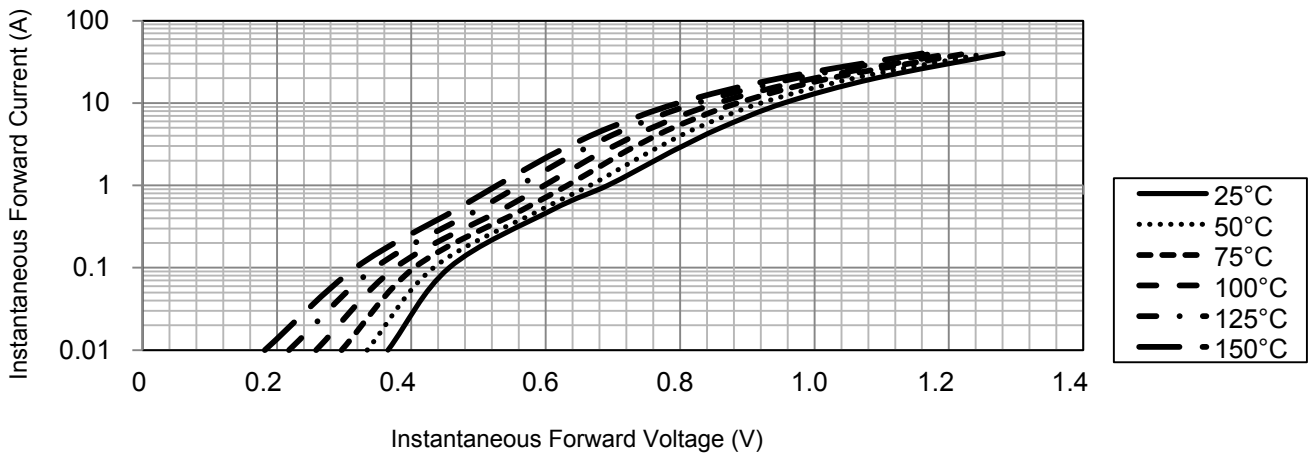


Figure 3. Typical Instantaneous Forward Characteristics

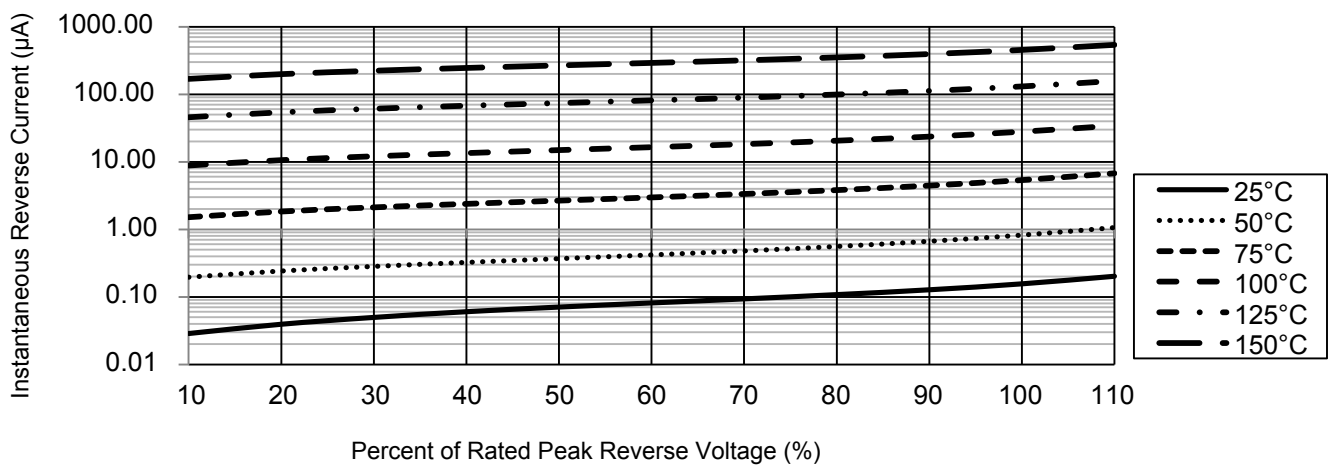
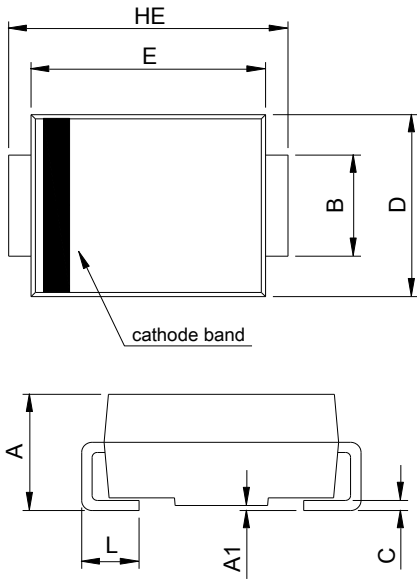


Figure 4. Typical Reverse Characteristics

# GSK27 thru GSK2B

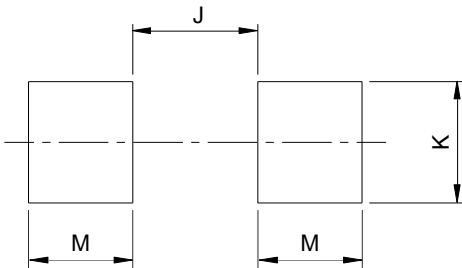
Surface Mount Schottky Rectifiers  
 Reverse Voltage 70V to 100V Forward Current 2A

## Package Outline Dimensions DO-214AA (SMB)



SMB (DO-214AA)				
DIM	Millimeters		Inches	
	Min.	Max.	Min.	Max.
A	1.95	2.65	0.077	0.104
A1	0.00	0.20	0.000	0.008
B	1.95	2.20	0.077	0.087
C	0.15	0.31	0.006	0.012
D	3.30	3.95	0.130	0.156
E	4.06	4.60	0.160	0.181
HE	5.10	5.60	0.201	0.220
L	0.76	1.60	0.030	0.063

## Recommended Pad Layout



Recommended Pad Layout (Reference ONLY)				
DIM	Millimeters		Inches	
	Min.	Max.	Min.	Max.
J	-	2.60	-	0.102
K	2.20	-	0.087	-
M	1.80	-	0.071	-

For more information, please contact us at: [inquiry@goodarksemi.com](mailto:inquiry@goodarksemi.com)