

Typical Electrical and Thermal Characteristic Curves

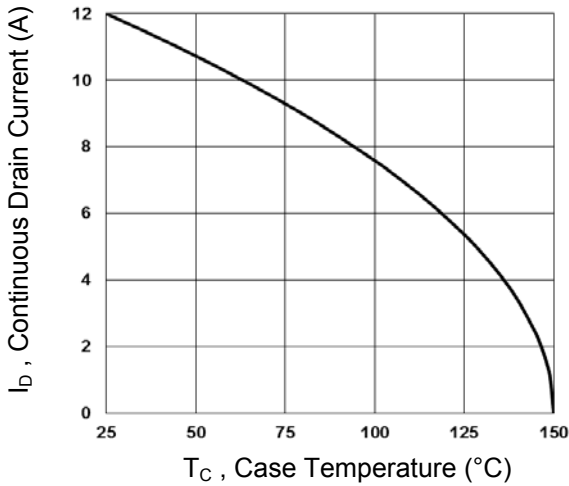


Fig.1 Continuous Drain Current vs. T_C

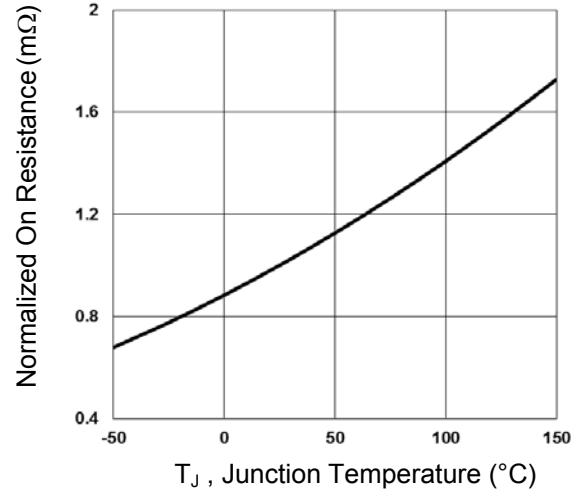


Fig.2 Normalized $R_{DS(ON)}$ vs. T_J

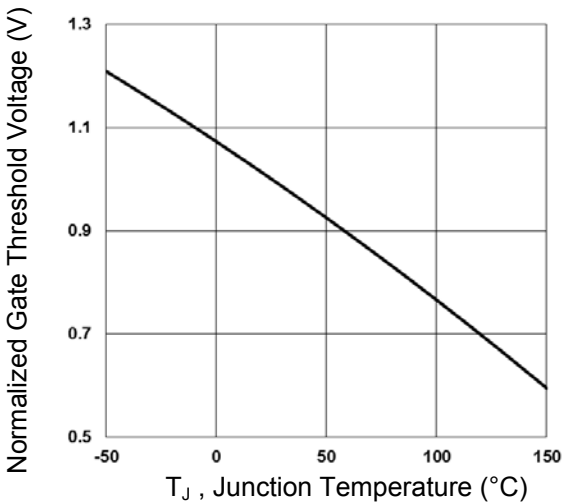


Fig.3 Normalized V_{th} vs. T_J

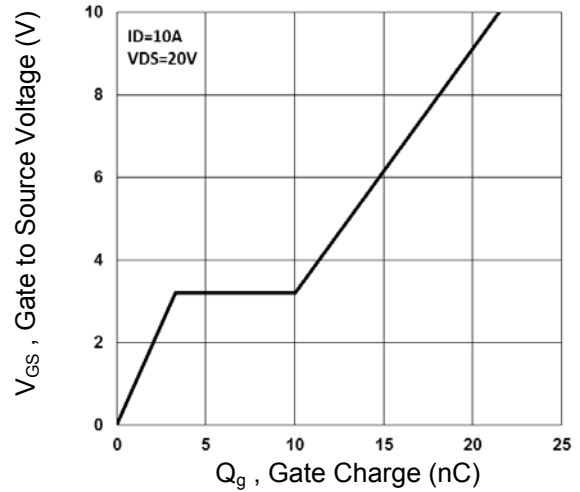


Fig.4 Gate Charge Waveform

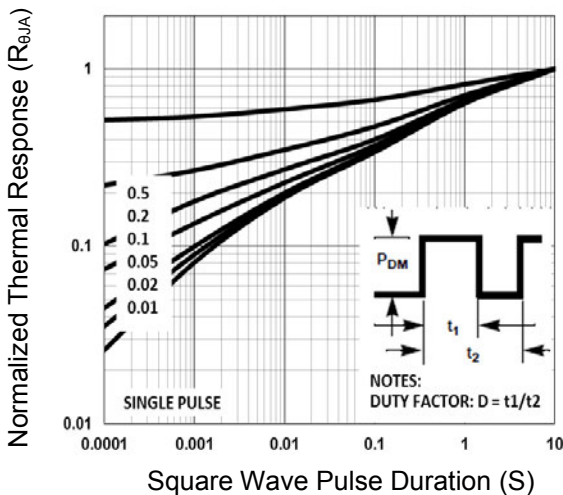


Fig.5 Normalized Transient Impedance

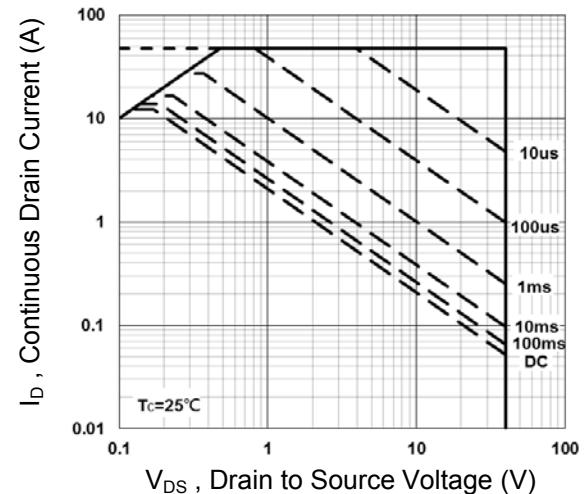


Fig.6 Maximum Safe Operation Area

Typical Electrical and Thermal Characteristic Curves

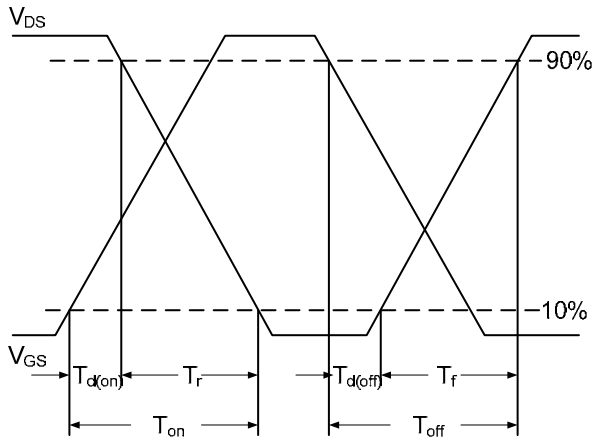


Fig.7 Switching Time Waveform

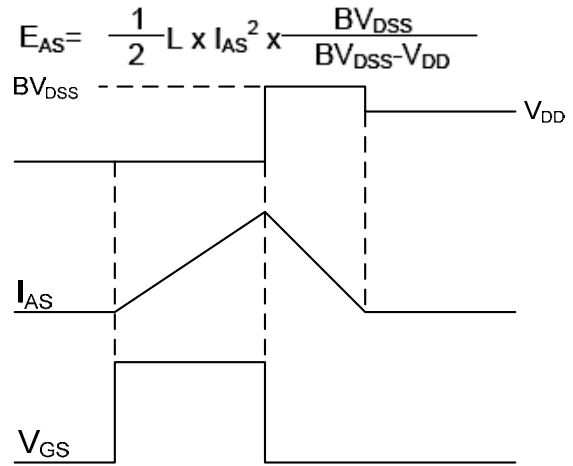
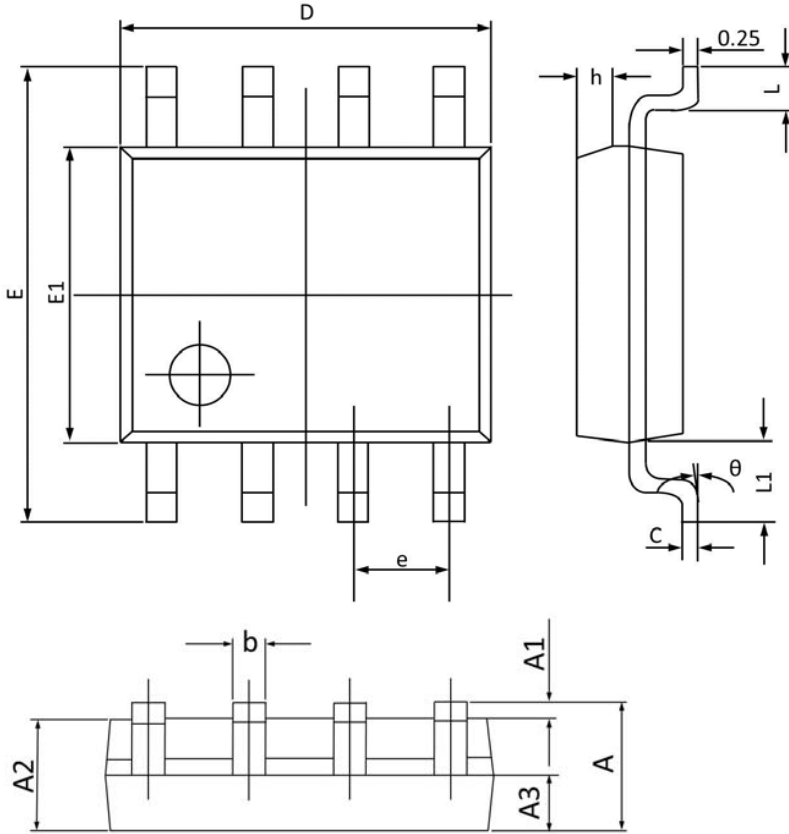


Fig.8 E_{AS} Waveform

Package Outline Dimensions

SOP-8



| Symbol | Dimensions In Millimeters | | Dimensions In Inches | |
|--------|---------------------------|------|----------------------|-------|
| | Min | Max | Min | Max |
| A | 1.35 | 1.75 | 0.053 | 0.068 |
| A1 | 0.1 | 0.25 | 0.004 | 0.009 |
| A2 | 1.3 | 1.5 | 0.052 | 0.059 |
| A3 | 0.6 | 0.7 | 0.024 | 0.027 |
| b | 0.39 | 0.48 | 0.016 | 0.018 |
| c | 0.21 | 0.26 | 0.009 | 0.01 |
| D | 4.7 | 5.1 | 0.186 | 0.2 |
| E | 5.8 | 6.2 | 0.229 | 0.244 |
| E1 | 3.7 | 4.1 | 0.146 | 0.161 |
| e | 1.270(BSC) | | 0.050(BSC) | |
| h | 0.25 | 0.5 | 0.01 | 0.019 |
| L | 0.5 | 0.8 | 0.019 | 0.031 |
| L1 | 1.050(BSC) | | 0.041(BSC) | |
| theta | 0° | 8° | 0° | 8° |