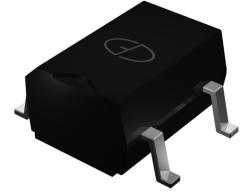


MB151S thru MB157S

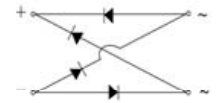
Glass Passivated Bridge Rectifiers
 Reverse Voltage 50 to 1000V Forward Current 1.5A

Features

- Glass passivated bridge rectifiers
- Plastic package has Underwriters Laboratory Flammability Classification 94V-0
- Low forward voltage drop
- High temperature soldering guaranteed: 260°C/10 seconds



Package:
TO-269AA (MBS)



Schematic Diagram

Mechanical Data

- Case: Molded plastic body over passivated junctions
- Terminals: plated leads solderable per MIL-STD-750, Method 2026
- Mounting position: any
- Weight: 0.078oz., 0.22g

Maximum Ratings and Electrical Characteristics

($T_A=25^\circ\text{C}$ unless otherwise noted)

Parameter	Symbol	MB151S	MB152S	MB153S	MB154S	MB155S	MB156S	MB157S	Unit
Maximum Repetitive Peak Reverse Voltage	V_{RRM}	50	100	200	400	600	800	1000	V
Maximum RMS Voltage	V_{RMS}	35	70	140	280	420	560	700	V
Maximum DC Blocking Voltage	V_{DC}	50	100	200	400	600	800	1000	V
Maximum Average Forward Output Current (see Fig.1) on glass-epoxy P.C.B	$I_{F(AV)}$	1.5							A
Peak Forward Surge Current (8.3 ms single half sine-wave superimposed on rated load, JEDEC method)	I_{FSM}	50							A
Rating for Fusig ($t < 8.3\text{ms}$)	I^2t	10							A^2sec
Maximum Instantaneous Forward Voltage Drop per Leg at 1.5A	V_F	1.10							V
Maximum DC Reverse Current at Rated DC Blocking Voltage per Leg	I_R	5 100							μA
Typical Thermal Resistance per Leg	$R_{\theta JA}$	85							$^\circ\text{C}/\text{W}$
	$R_{\theta JL}$	25							
Typical Junction Capacitance at 4.0V, 1.0MHz	C_j	25							pF
Operating Junction and Storage Temperature Range	T_J, T_{STG}	-55 to +150							$^\circ\text{C}$

Notes: 1. On glass epoxy P.C.B. mounted on 0.05x0.05"(1.3x1.3mm) pads

Ratings and Characteristics Curves ($T_A = 25^\circ\text{C}$ unless otherwise noted)

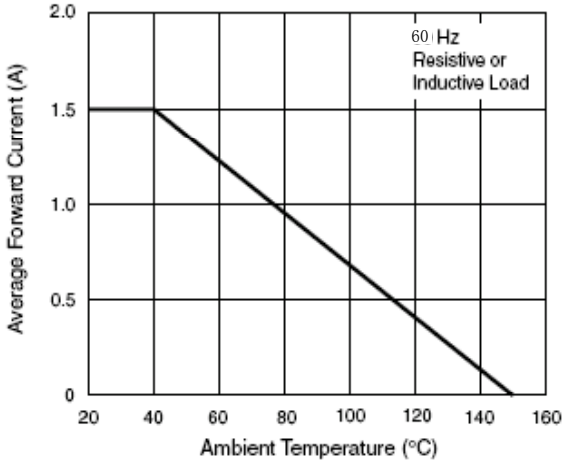


Figure 1. Forward Current Derating Curve Per Diode

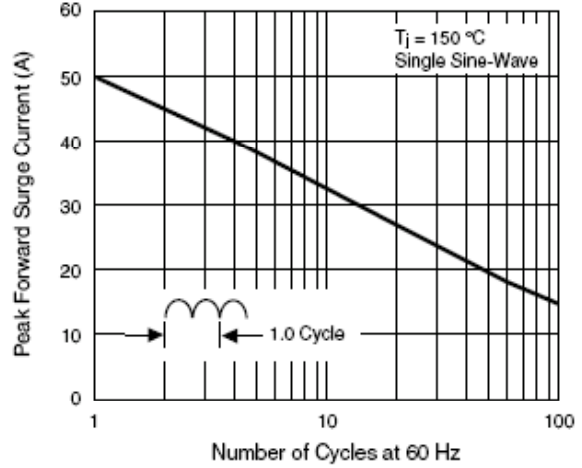


Figure 2. Maximum Non-Repetitive Peak Forward Surge Current Per Diode

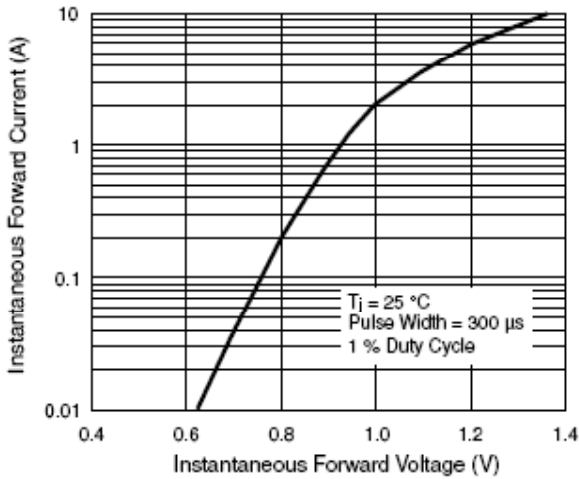


Figure 3. Typical Forward Characteristics Per Diode

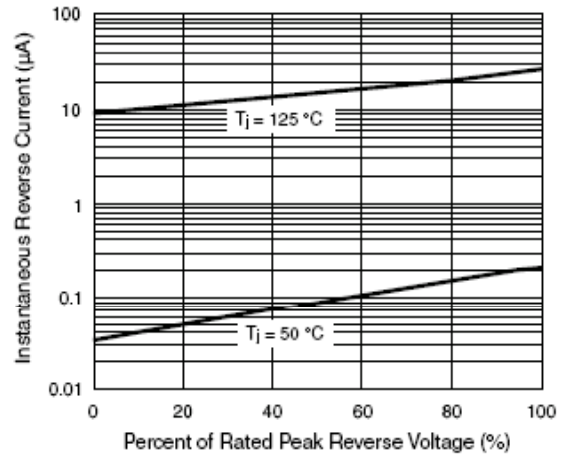


Figure 4. Typical Reverse Leakage Characteristics Per Diode

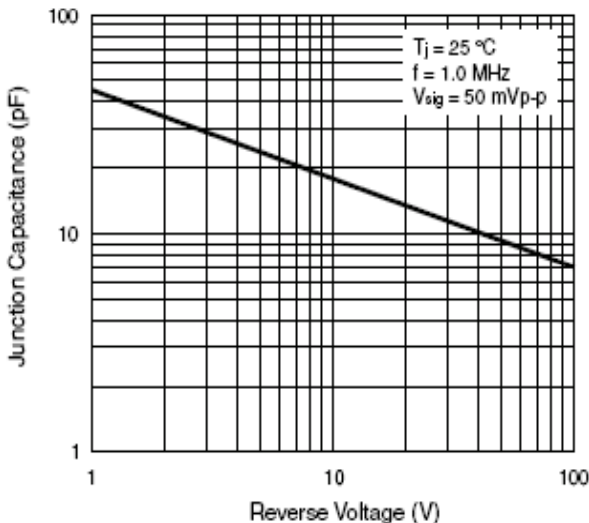


Figure 5. Typical Junction Capacitance Per Diode

MB151S thru MB157S

Glass Passivated Bridge Rectifiers
 Reverse Voltage 50 to 1000V Forward Current 1.5A

Package Outline Dimensions

in inches (millimeters)

TO-269AA (MBS)

