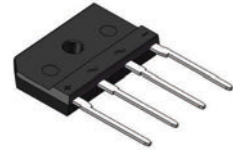


GSKBJ2001 thru GSKBJ2010

Bridge Rectifiers
 Reverse Voltage 100V to 1000V Forward Current 20A

Features

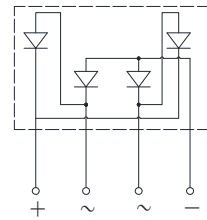
- Plastic package has underwriters laboratory flammability classification 94V-0
- Glass passivated chip junction
- High current capability
- Low forward voltage drop
- High temperature soldering guaranteed: 260°C/10 seconds at terminals.
 Component in accordance to RoHS 2015/863/EU



4KBJ

Mechanical Data

- Case: 4KBJ molded plastic body
- Terminals: plated leads solderable per MIL-STD-750, method 2026
- Mounting position: Any



Schematic Diagram

Maximum Ratings & Electrical Characteristics

(Rating at 25°C ambient temperature unless otherwise specified. Single phase, half wave, 60Hz, resistive or inductive load.
 For capacitive load, derate current by 20%.)

Parameter	Symbols	GSKBJ 2001	GSKBJ 2002	GSKBJ 2004	GSKBJ 2006	GSKBJ 2008	GSKBJ 2010	Units
Maximum Recurrent Peak Reverse Voltage	V_{RRM}	100	200	400	600	800	1000	V
Maximum RMS Voltage	V_{RMS}	70	140	280	420	560	700	V
Maximum DC Blocking Voltage	V_{DC}	100	200	400	600	800	1000	V
Maximum Average Forward Rectified Current	$I_{(AV)}$	20						A
Peak Forward Surge Current 8.3ms Single Half Sine-Wave Superimposed on Rated Load (JEDEC Method)	I_{FSM}	260						A
Rating for Fusing ($t < 8.3ms$)	I^2t	280						A ² s
Maximum Instantaneous Forward Voltage at 10.0A per Diode	V_F	1.1						V
Maximum DC Reverse Current at Rated DC Blocking Voltage	$T_J = 25^\circ C$	5						μA
	$T_J = 125^\circ C$	500						
Typical Thermal Resistance, Junction-Ambient ¹	$R_{\theta JA}$	20						°C/W
Typical Thermal Resistance, Junction-Case ¹	$R_{\theta JC}$	0.8						°C/W
Typical Junction Capacitance ²	C_J	70						pF
Operating Temperature Range	T_J	-55 to +150						°C
Storage Temperature Range	T_{STG}	-55 to +150						°C

Notes:

1. Device mounted on 300mm*300mm*1.6mm cu plate heatsink.
2. Measured at 1.0MHz and applied reverse voltage of 4.0V DC.

Ratings and Characteristics Curves

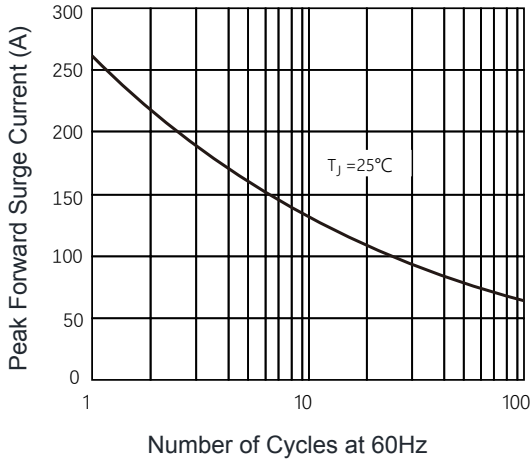


Figure 1. Maximum Forward Surge Current

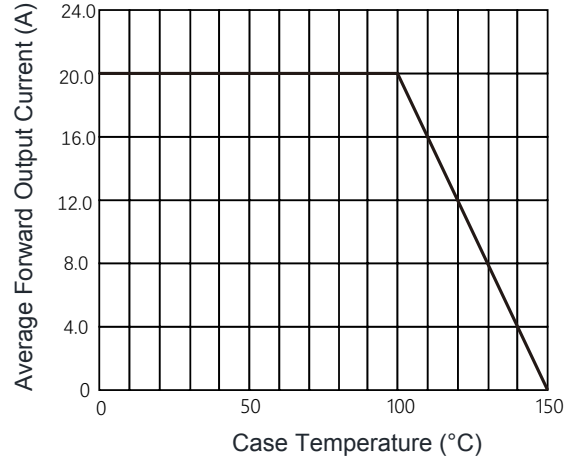


Figure 2. Forward Current Derating Curve

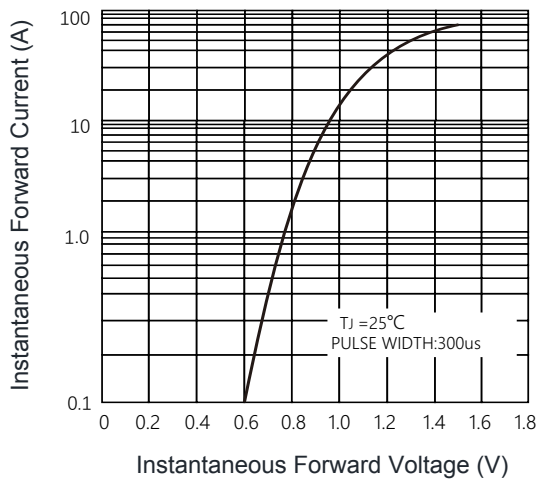


Figure 3. Typical Forward Characteristics

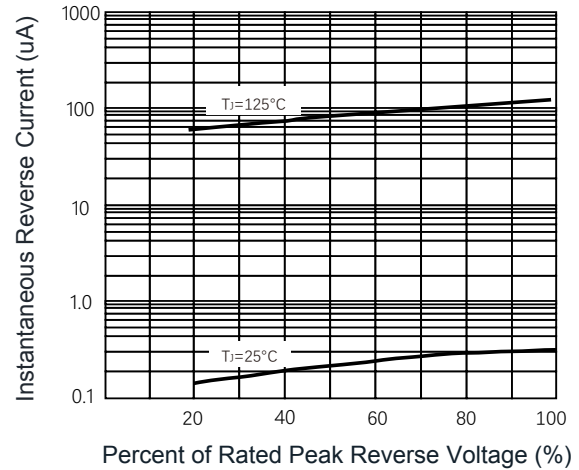
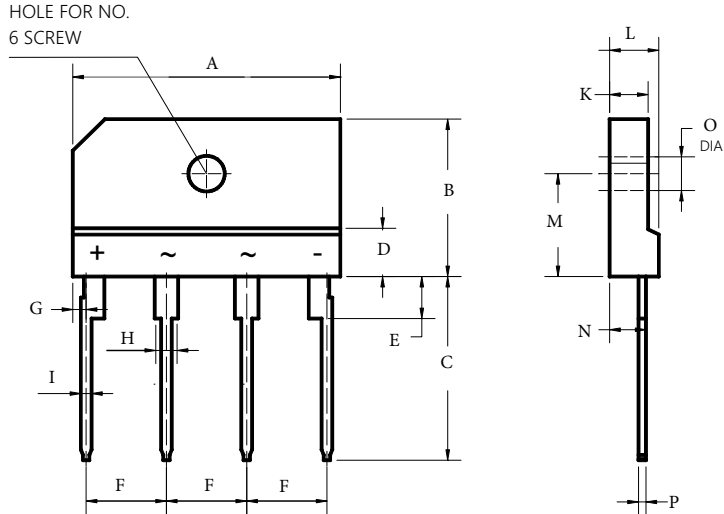


Figure 4. Typical Reverse Characteristics

Package Outline Dimensions (4KBJ)



Symbol	Dimensions In Millimeters		Dimensions In Inches	
	Min.	Max.	Min.	Max.
A	24.70	25.30	0.983	0.995
B	14.70	15.30	0.578	0.602
C	17.00	18.00	0.669	0.708
D	3.80	4.20	0.150	0.165
E	3.30	3.70	0.130	0.146
F	7.30	7.70	0.287	0.303
G	1.05	1.45	0.041	0.057
H	1.70	2.10	0.069	0.083
I	0.90	1.10	0.035	0.043
L	4.40	4.80	0.173	0.189
M	9.50	10.10	0.374	0.398
N	3.20	3.40	0.126	0.134
O	3.10	3.40	0.122	0.134
P	0.60	0.80	0.023	0.031
K	3.40	3.80	0.134	0.150