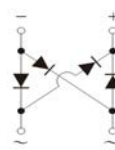


GSB2F thru GSB10F

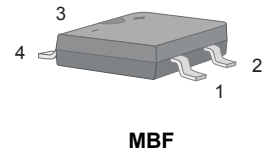
Glass Passivated Single-Phase Bridge Rectifiers
 Reverse Voltage 200V to 1000V Forward Current 0.8A

Features

- The plastic package carries Underwriters Laboratory Flammability Classification 94V-0
- Ideal for printed circuit board
- Glass passivated junction chip
- Low reverse leakage
- High forward surge current capability
- High temperature soldering guaranteed 250°C/10 seconds at terminals



Schematic Diagram



MBF

PIN	DESCRIPTION
1	Input Pin (~)
2	Input Pin (~)
3	Output Anode (+)
4	Output Cathode (-)

Mechanical Data

- Case: Molded plastic body
- Terminals: Plated leads solderable per MIL-STD-750, Method 2026
- Polarity : Polarity symbol marking on body
- Mounting position: Any
- Weight: 0.0027oz., 0.078g



Maximum Ratings and Electrical Characteristics (T_A=25°C unless otherwise noted)

Parameter	Symbol	GSB2F	GSB4F	GSB6F	GSB8F	GSB10F	Unit
Maximum Repetitive Peak Reverse Voltage	V _{RRM}	200	400	600	800	1000	V
Maximum RMS Voltage	V _{RMS}	140	280	420	560	700	V
Maximum DC Blocking Voltage	V _{DC}	200	400	600	800	1000	V
Maximum Average Forward Rectified Current at T _L =100°C On Glass-Epoxy P.C.B. ¹	I _{F(AV)}	0.8					A
Peak Forward Surge Current 8.3ms Single Half Sine-Wave Superimposed On Rated Load	I _{FSM}	30					A
Rating For Fusing (t=8.3ms, T _A =25°C)	I ² t	3.74					A ² Sec
Maximum Instantaneous Forward Voltage at 0.8A	V _F	1.1					V
Maximum DC Reverse Current at Rated DC Blocking Voltage (T _A =25°C)	I _R	5					uA
Maximum DC Reverse Current At Rated DC Blocking Voltage (T _A =125°C)		500					uA
Typical Junction Capacitance ²	C _J	15					pF
Typical Thermal Resistance	R _{θJA}	76					°C/W
Operating Junction Temperature	T _J	-55 To +150					°C
Storage Temperature	T _{STG}	-55 To +150					°C

Note: 1. Mounted on glass epoxy PC board with 1.3*1.3mm solder pad
 2. Measured at 1MHz and applied reverse voltage of 4.0V D.C.

Ratings and Characteristics Curves

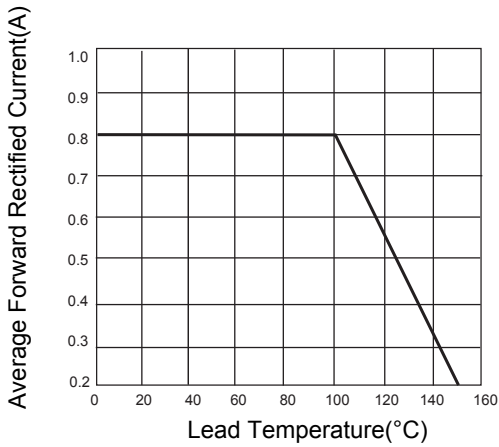


Figure 1. Derating Curve For Output Rectified Current

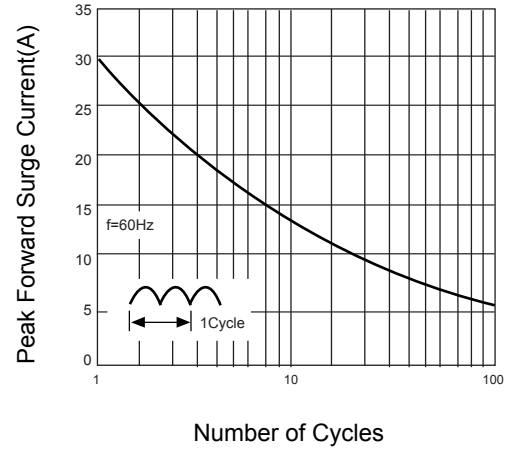


Figure 2. Maximum Non-Repetitive Peak Forward Surge Current Per Leg

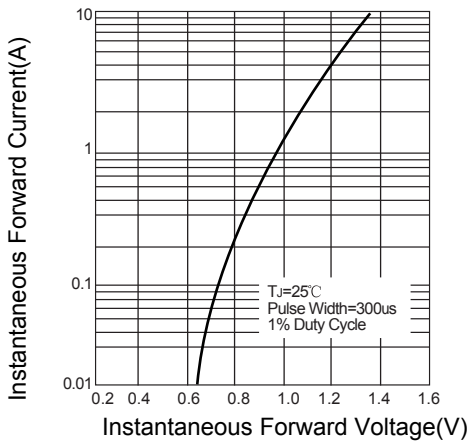


Figure 3. Typical Forward Voltage Characteristics

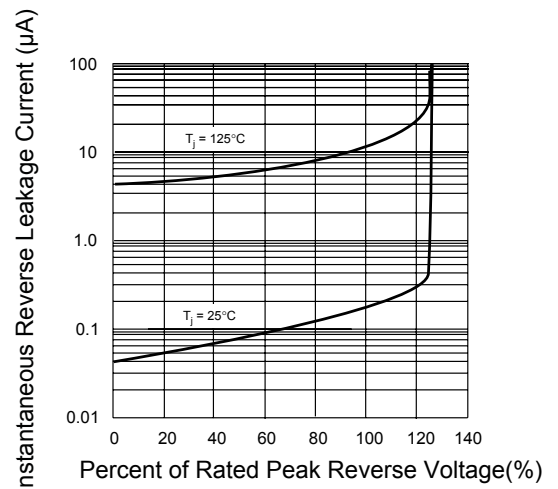


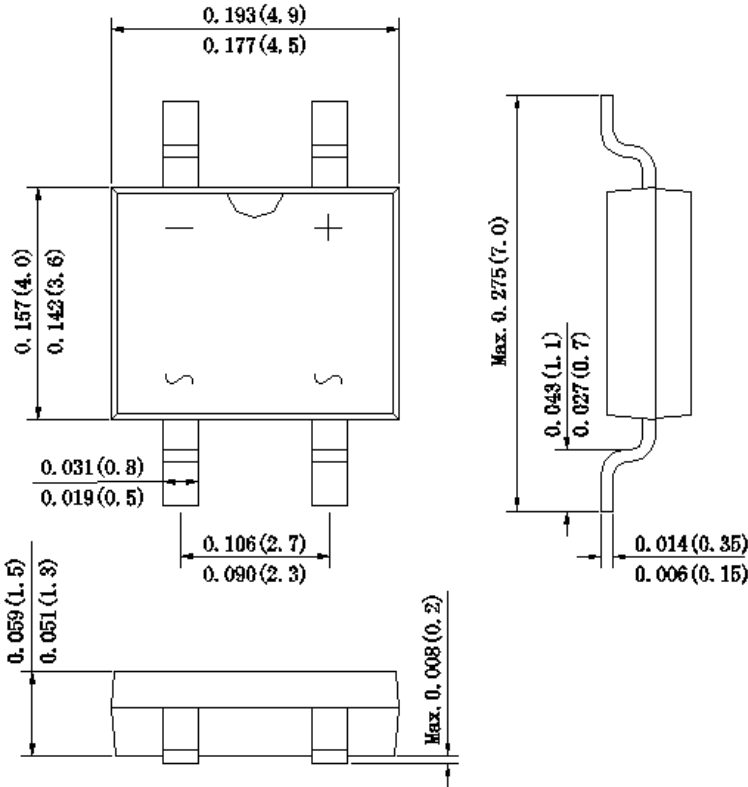
Figure 4. Typical Reverse Leakage Characteristics

GSB2F thru GSB10F

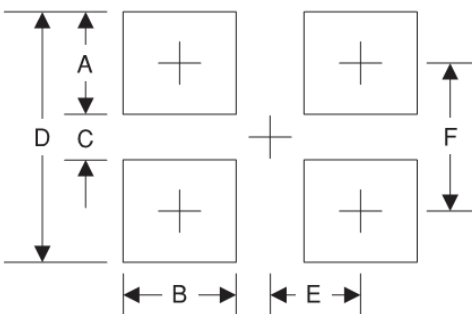
Glass Passivated Single-Phase Bridge Rectifiers
 Reverse Voltage 200V to 1000V Forward Current 0.8A

Package Outline Dimensions (MBF)

Dimensions in inches and (millimeters)



Recommended Pad Layout



Symbol	Unit (mm)	Unit (inch)
A	1.7	0.067
B	1.0	0.039
C	4.40	0.173
D	8.10	0.319
E	1.25	0.049
F	6.30	0.248