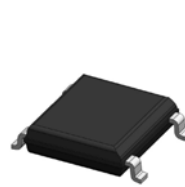
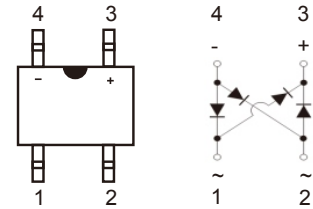


Features

- Glass passivated standard bridge rectifiers
- Ideal for automated placement
- Moisture sensitivity: level 1, per J-STD-020
- High temperature soldering guaranteed: 260°C/10 seconds at terminals
- Plastic package has underwriters laboratory flammability classification 94V-0



ABS



Schematic Diagram

Applications

- For use of general purpose AC to DC bridge rectification in power supply, charger, office appliance, home appliance and telecom device.

Maximum Ratings and Electrical Characteristics

($T_A=25^\circ\text{C}$ unless otherwise noted. Single phase, half wave, 60HZ, resistive or inductive load. For capacitive load, derate current by 20%.)

Parameter	Symbol	GSAB S1	GSAB S2	GSAB S4	GSAB S6	GSAB S8	GSAB S10	Unit	
Maximum Recurrent Peak Reverse Voltage	V_{RRM}	100	200	400	600	800	1000	V	
Maximum RMS Voltage	V_{RMS}	70	140	280	420	560	700	V	
Maximum DC Blocking Voltage	V_{DC}	100	200	400	600	800	1000	V	
Maximum Average Forward Rectified Current	$I_{(AV)}$	1.0						A	
Peak Forward Surge Current 8.3ms Single Half Sine-wave Superimposed on Rated Load (JEDEC method)	I_{FSM}	30						A	
Maximum Instantaneous Forward Voltage	V_F	$I_F=0.5A$						0.95	V
		$I_F=1.0A$						1.10	
Rating for Fusing (1ms<t<8.3ms)	I^2t	5.0						A^2s	
Maximum DC Reverse Current at Rated DC Blocking Voltage	I_R	$T_A=25^\circ\text{C}$						5	μA
		$T_A=125^\circ\text{C}$						100	
Typical Junction Capacitance ¹	C_J	15						pF	
Typical Thermal Resistance ²	$R_{\theta JA}$	62						$^\circ\text{C/W}$	
	$R_{\theta JL}$	25							
Operating Junction and Storage Temperature Range	T_J, T_{STG}	-55 to +150						$^\circ\text{C}$	

Notes

1. Measured at 1MHZ and applied reverse voltage of 4.0 Volts.
2. Device mounted on FR-4 substrate, 1x1 inch, 2oz, single-sided, PC boards with 0.56**0.73" copper pad.

Ratings and Characteristic Curves ($T_A=25^\circ\text{C}$ unless otherwise noted)

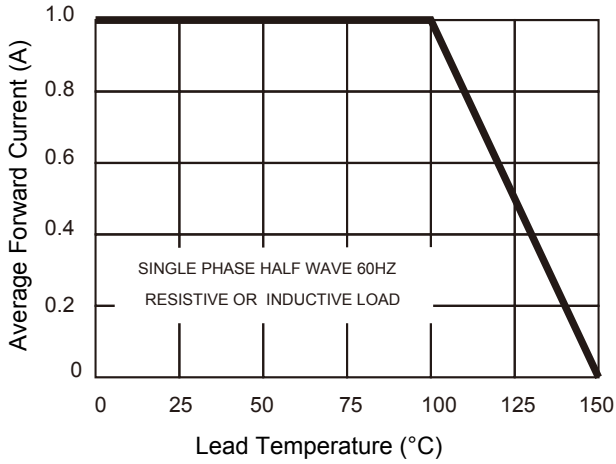


Figure 1. Output Rectifier Current Derating Curve

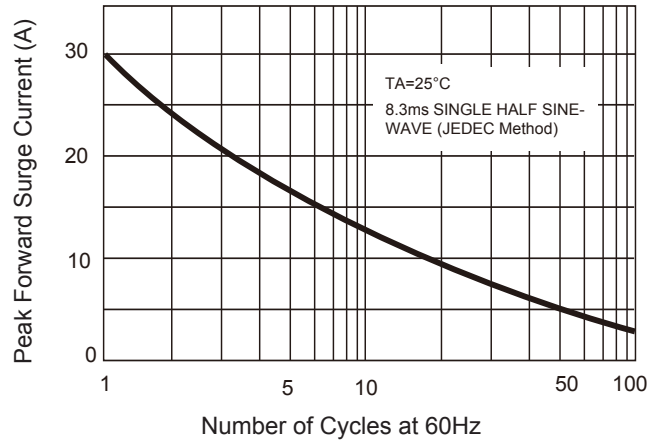


Figure 2. Maximum Non-Repetitive Peak Forward Surge Current

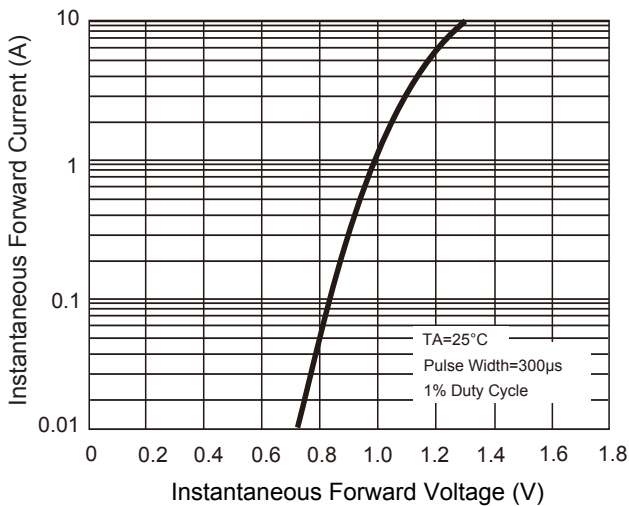


Figure 3. Typical Forward Characteristics

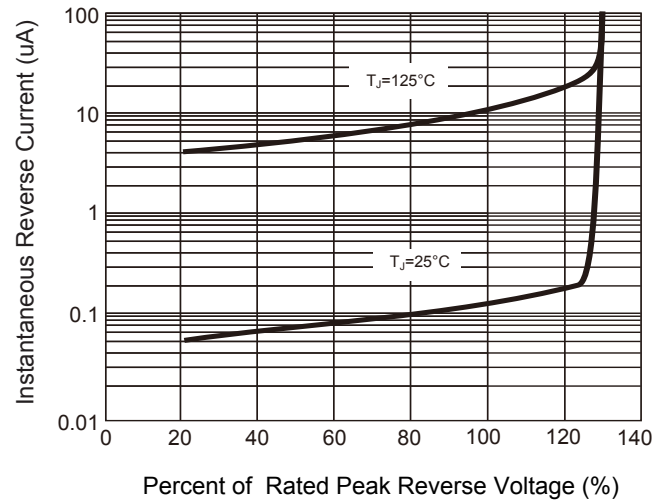


Figure 4. Typical Reverse Characteristics

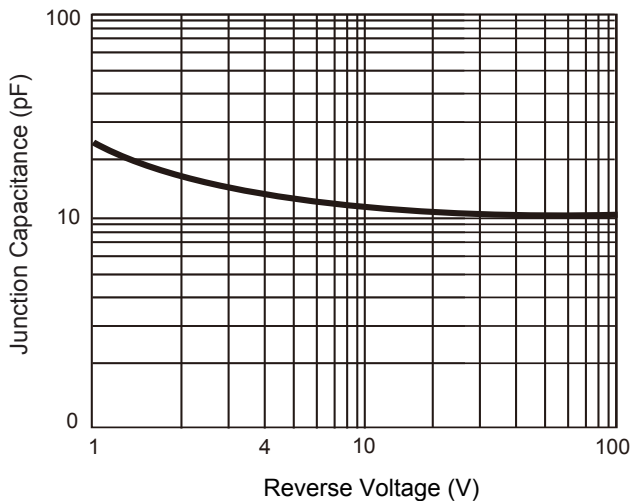
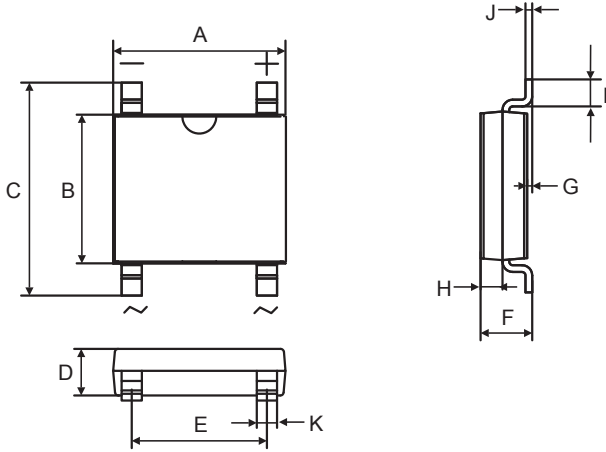


Figure 5. Typical Junction Capacitance

GSABS1 thru GSABS10

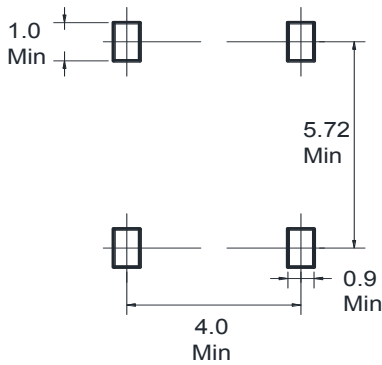
Surface Mount Glass Passivated Bridge Rectifiers
 Reverse Voltage 100 to 1000V Output Current 1.0A

Package Outline Dimensions (ABS)



Symbol	Dimensions in Millimeters		Dimensions in Inches	
	Min	Max	Min	Max
A	4.80	5.40	0.189	0.213
B	4.20	4.60	0.165	0.181
C	6.00	6.80	0.236	0.268
D	1.22	1.50	0.048	0.059
E	3.80	4.40	0.150	0.173
F	1.20	1.50	0.047	0.059
G	0.05	0.20	0.002	0.008
H	0.37	0.47	0.015	0.019
I	0.40	0.80	0.016	0.031
J	0.15	0.25	0.006	0.010
K	0.50	0.85	0.020	0.033

Recommended Pad Layout



Note:

1. Pad dimensions for reference
2. Unit in millimeters