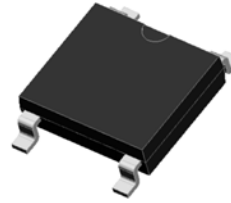


GSABS202S thru GSABS210S

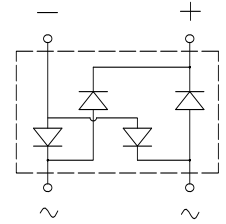
Single Phase Surface Mount Bridge Rectifiers
 Reverse Voltage 200 to 1000V Output Current 2.0A

Features

- Glass passivated standard bridge rectifiers
- Moisture sensitivity: Level 1, per J-STD-020
- Solder dip 260°C, 10s
- Plastic package has Underwriters Laboratory Flammability Classification 94V-0
- RoHS-compliant and Halogen-free



ABS



Schematic Diagram

Applications

For use of general purpose AC-DC bridge rectification in power supply, charger and telecom device applications.

Absolute Maximum Ratings ($T_A=25^\circ\text{C}$ unless otherwise noted)

Parameter	Symbol	GSABS 202S	GSABS 204S	GSABS 206S	GSABS 208S	GSABS 210S	Unit
Maximum Repetitive Peak Reverse Voltage	V_{RRM}	200	400	600	800	1000	V
Maximum RMS Voltage	V_{RMS}	140	280	420	560	700	V
Maximum DC Blocking Voltage	V_{DC}	200	400	600	800	1000	V
Maximum Average Output Rectified Current	$I_{O(AV)}$	2.0					A
Peak Forward Surge Current (8.3 ms Single Half Sine-wave Superimposed on Rated Load)	I_{FSM}	60					A
Rating for Fusing ($t < 8.3\text{ms}$)	I^2t	15					A^2sec
Operating Junction and Storage Temperature Range	T_J , T_{STG}	- 55 to + 150					$^\circ\text{C}$

Electrical Characteristics ($T_A=25^\circ\text{C}$ unless otherwise noted)

Parameter	Test Conditions	Symbol	GSABS202S thru GSABS210S	Unit
Maximum Instantaneous Forward Voltage	$I_F=1.0\text{A}$	V_F	0.95	V
	$I_F=2.0\text{A}$		1.1	
Maximum DC Reverse Current at Rated DC Blocking Voltage	$T_J=25^\circ\text{C}$	I_R	5.0	μA
	$T_J=125^\circ\text{C}$		100	
Typical Junction Capacitance	4.0V, 1MHz	C_J	18	pF

Thermal Characteristics ($T_A=25^\circ\text{C}$ unless otherwise noted)

Parameter	Symbol	GSABS202S thru GSABS210S	Unit
Thermal Resistance, Junction to Ambient	$R_{\theta JA}$	62.5	$^\circ\text{C/W}$
Thermal Resistance, Junction to Lead	$R_{\theta JL}$	25	
Thermal Resistance, Junction to Case	$R_{\theta JC}$	8.0	

Notes: Device mounted on P.C.B of 35mm*25mm*1.7mm

Typical Electrical Characteristic Curves

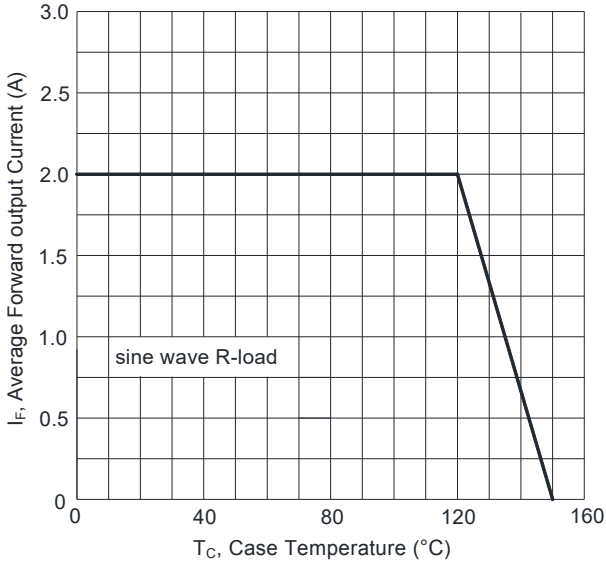


Figure 1. Forward Current Derating Curve

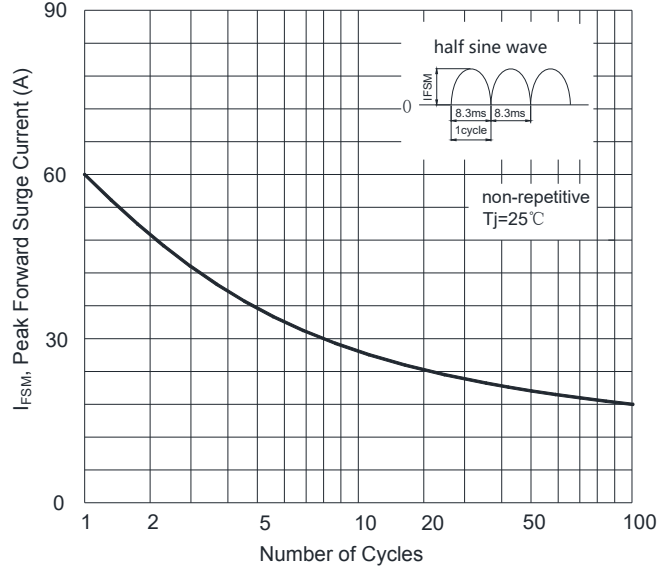


Figure 2. Maximum Non-Repetitive Peak Forward Surge Current

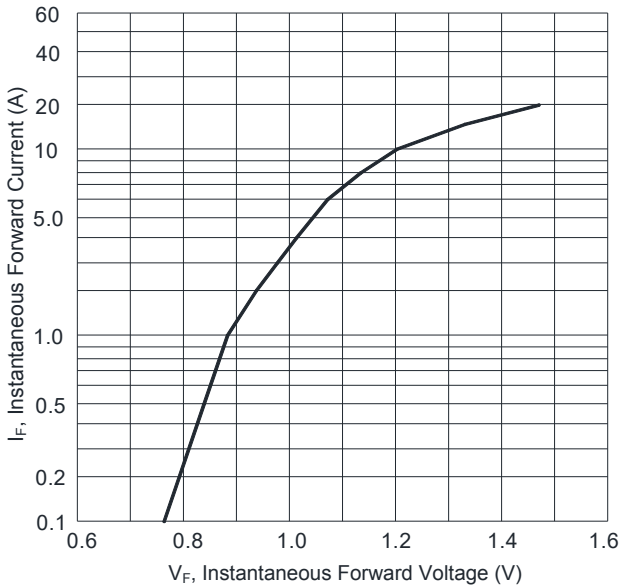


Figure 3. Typical Instantaneous Forward Characteristics

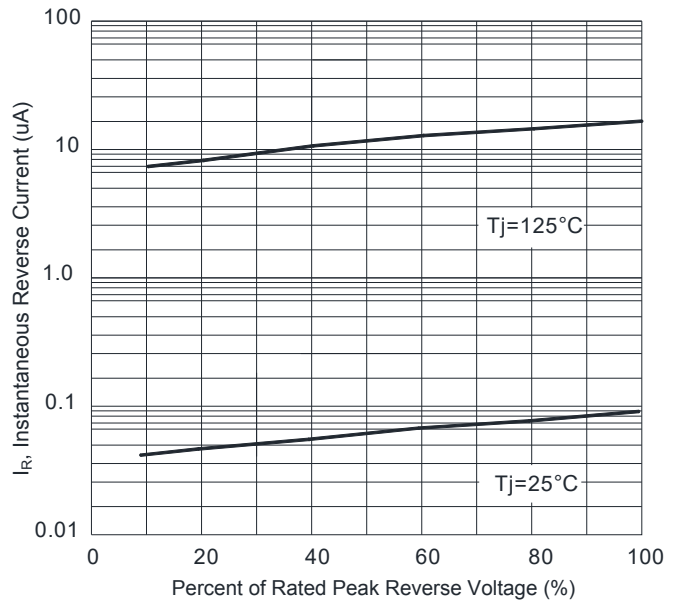
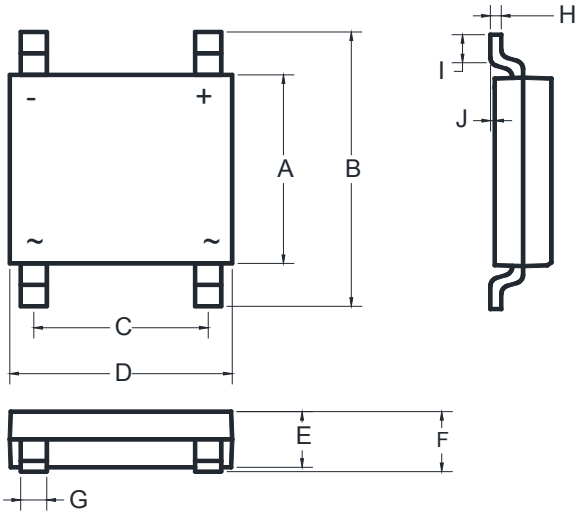


Figure 4. Typical Reverse Characteristics

GSABS202S thru GSABS210S

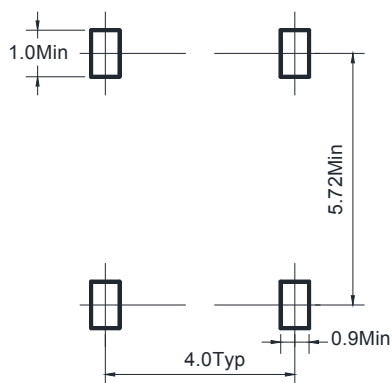
Single Phase Surface Mount Bridge Rectifiers
 Reverse Voltage 200 to 1000V Output Current 2.0A

Package Outline Dimensions (ABS)



Symbol	Dimensions In Millimeters		Dimensions In Inches	
	Min	Max	Min	Max
A	4.30	4.50	0.169	0.177
B	6.00	6.40	0.236	0.252
C	3.90	4.10	0.154	0.161
D	4.90	5.10	0.193	0.201
E	1.25	1.45	0.049	0.057
F	1.60 Max		0.063 Max	
G	0.60	0.70	0.024	0.028
H	0.15	0.25	0.006	0.010
I	0.30	0.80	0.012	0.031
J	0.02	0.15	0.001	0.006

Recommended Pad Layout



Dimensions in millimeters