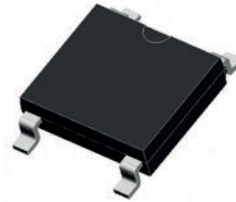


GSABS202 thru GSABS210

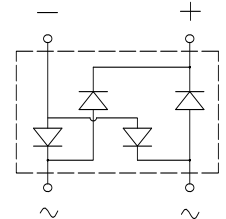
Surface Mount Glass Passivated Bridge Rectifiers
 Reverse Voltage 200V to 1000V Forward Current 2.0A

Features

- Plastic package has underwriters laboratory flammability classification 94V-0
- Glass passivated chip junction
- Rating to 1000V PRV
- Ideal for printed circuit board
- High temperature soldering guaranteed: 260°C/10 seconds at terminals
- Component in accordance to RoHS 2011/ 65/EU



ABS



Schematic Diagram

Mechanical Data

- Case: ABS molded plastic body
- Epoxy: UL94V-0 rate flame retardant
- Terminals: Plated leads solderable per MIL-STD-750, method 2026
- Mounting position: Any

Maximum Ratings and Electrical Characteristics

(Rating at 25°C ambient temperature unless otherwise specified. Single phase, half wave, 60Hz, resistive or inductive load. For capacitive load, derate current by 20%.)

Parameters		Symbols	GSABS 202	GSABS 204	GSABS 206	GSABS 208	GSABS 210	Units
Maximum Recurrent Peak Reverse Voltage		V_{RRM}	200	400	600	800	1000	V
Maximum RMS Voltage		V_{RMS}	140	280	420	560	700	V
Maximum DC Blocking Voltage		V_{DC}	200	400	600	800	1000	V
Maximum Average Forward Rectified Current		$I_{(AV)}$	2.0					A
Peak Forward Surge Current 8.3ms Single Half Sine-Wave Superimposed on Rated Load (JEDEC Method)		I_{FSM}	60					A
Maximum Instantaneous Forward Voltage at 2.0A DC		V_F	1.1					V
Rating for Fusing (t<8.3ms)		I^2t	15					A ² s
Maximum DC Reverse Current at Rated DC Blocking Voltage	$T_A=25^\circ\text{C}$	I_R	10					μA
	$T_A=125^\circ\text{C}$		500					
Typical Junction Capacitance ¹		C_J	16					pF
Typical Thermal Resistance, Junction-Ambient ²		$R_{\theta JA}$	62					°C/W
Typical Thermal Resistance, Junction-Case ²		$R_{\theta JC}$	25					°C/W
Operating Junction and Storage Temperature Range		T_J, T_{STG}	-55 to +150					°C

Notes:

1. Measured at 1MHz and applied reverse voltage of 4.0 Volts.
2. Thermal resistance junction to ambient.

Ratings and Characteristics Curves

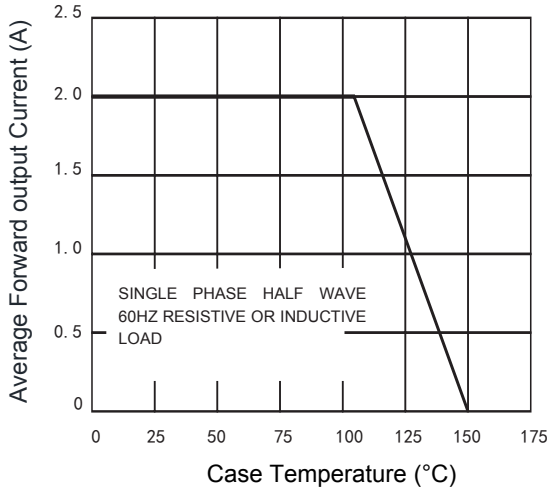


Figure 1. Typical Forward Current Derating Curve

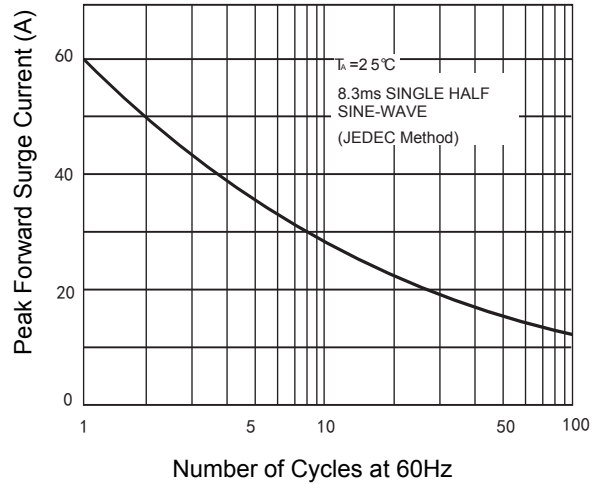


Figure 2. Maximum Non-Repetitive Forward Surge Current

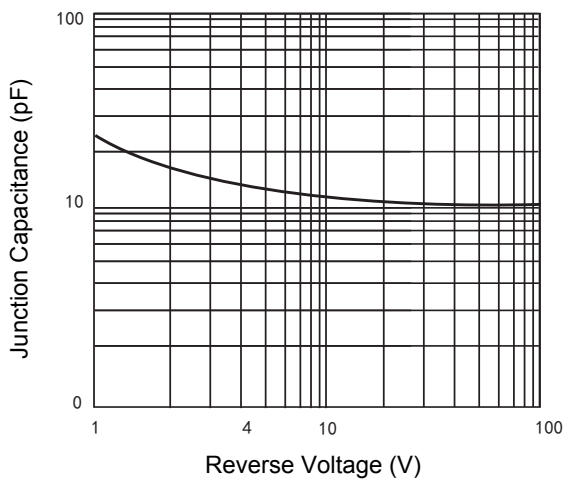


Figure 3. Typical Junction Capacitance

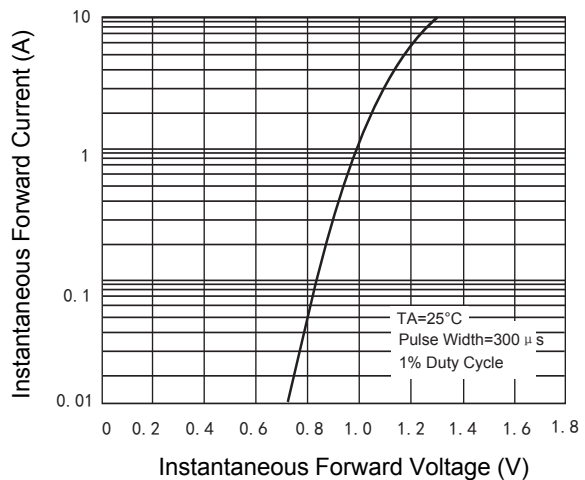


Figure 4. Typical Forward Characteristics

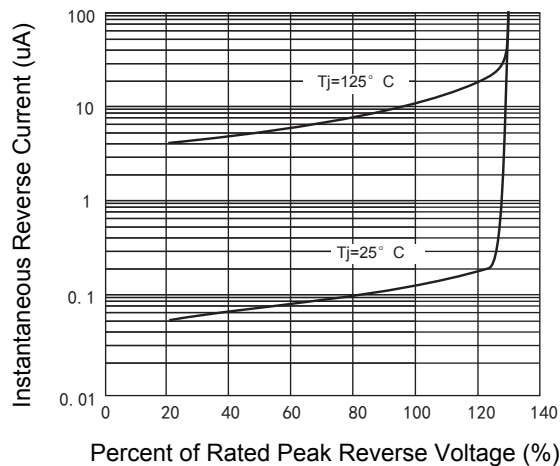
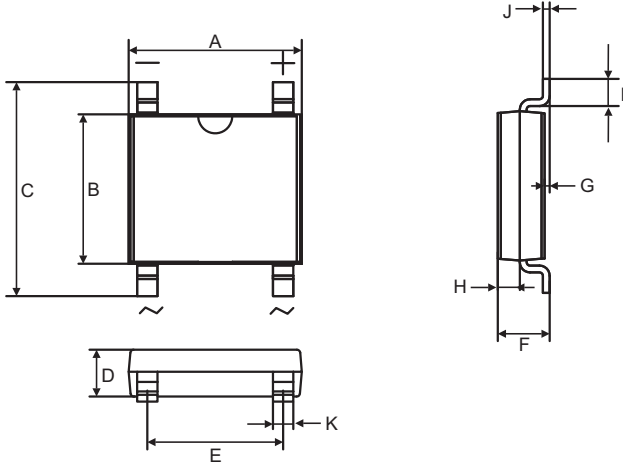


Figure 5. Typical Reverse Characteristics

GSABS202 thru GSABS210

Surface Mount Glass Passivated Bridge Rectifiers
 Reverse Voltage 200V to 1000V Forward Current 2.0A

Package Outline Dimensions (ABS)



Symbol	Dimensions In Millimeters		Dimensions In Inches	
	Min.	Max.	Min.	Max.
A	4.80	5.40	0.189	0.213
B	4.20	4.60	0.165	0.181
C	6.00	6.80	0.236	0.268
D	1.22	1.50	0.048	0.059
E	3.80	4.40	0.150	0.173
F	1.20	1.50	0.047	0.059
G	0.05	0.20	0.002	0.008
H	0.37	0.47	0.015	0.019
I	0.40	0.80	0.016	0.031
J	0.15	0.25	0.006	0.010
K	0.50	0.85	0.020	0.033