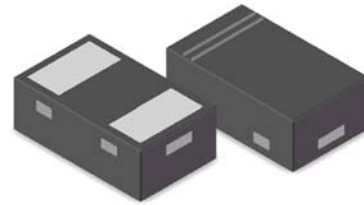
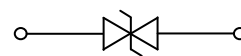


**Features**

- 200 Watts peak pulse power ( $t_p=8/20\mu s$ )
- Bidirectional configuration
- Protects one I/O port
- Low clamping voltage
- Low Leakage current
- ESD-immunity acc. IEC 61000-4-2  $\pm 30KV$  contact $\pm 30KV$  air
- IEC 61000-4-4 (EFT) 40A (5/50ns)
- RoHS compliant



**DFN1006**



**Schematic Diagram**

**Applications**

- Cell Phone
- PDA
- Notebook
- Digital Cameras
- Portable Instrumentation
- Audio and video Equipment



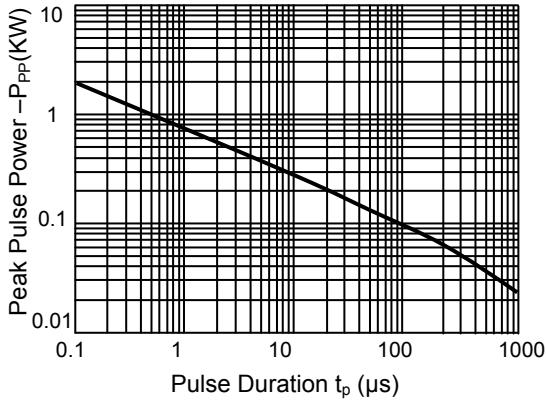
**Absolute Maximum Ratings** ( $T_A=25^{\circ}C$  unless otherwise specified)

Parameter	Symbol	Value	Unit
Peak Pulse Power ( $t_p=8/20 \mu S$ )	$P_{PP}$	200	W
Peak Pulse Current ( $t_p=8/20 \mu S$ )	$I_{PP}$	10	A
Junction Temperature	$T_J$	-55 to +125	$^{\circ}C$
Storage Temperature	$T_{STG}$	-55 to +150	$^{\circ}C$

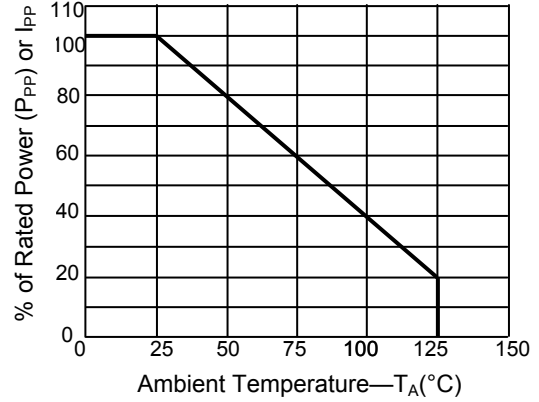
**Electrical Characteristics** ( $T_A=25^{\circ}C$  unless otherwise specified.)

Parameterer	Symbol	Condition	Min	Typ	Max	Unit
Reverse Stand-Off Voltage	$V_{RWM}$	-	-	-	7	V
Reverse Breakdown Voltage	$V_{BR}$	$I_T=1mA$	8.5	-	12	V
Reverse Leakage Current	$I_R$	$V_R=7V$	-	-	0.5	$\mu A$
Clamping Voltage	$V_C$	$I_{PP}=10A, T_P=8/20\mu S$	-	17.5	21	V
Junction Capacitance	$C_J$	$V_R=0, f=1MHz$	-	30	34	pF

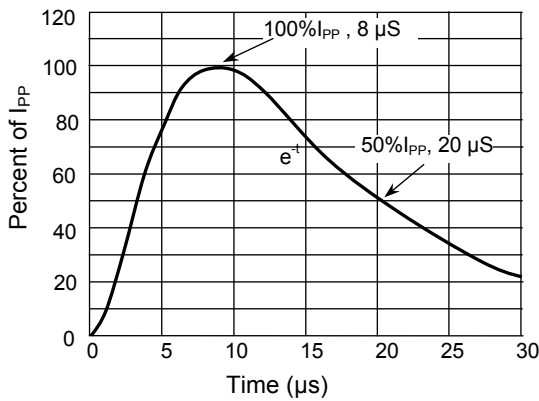
**Typical Characteristic Curves**



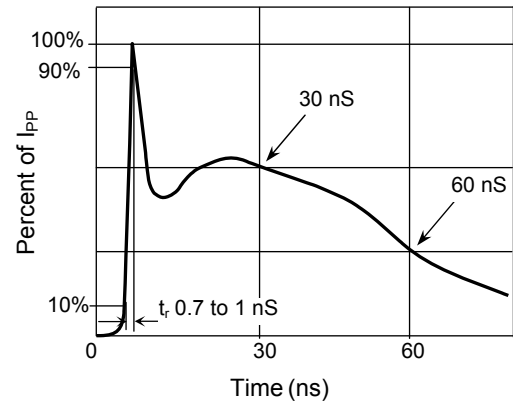
**Figure 1. Peak Pulse Power Rating Curve**



**Figure 2. Pulse Derating Curve**



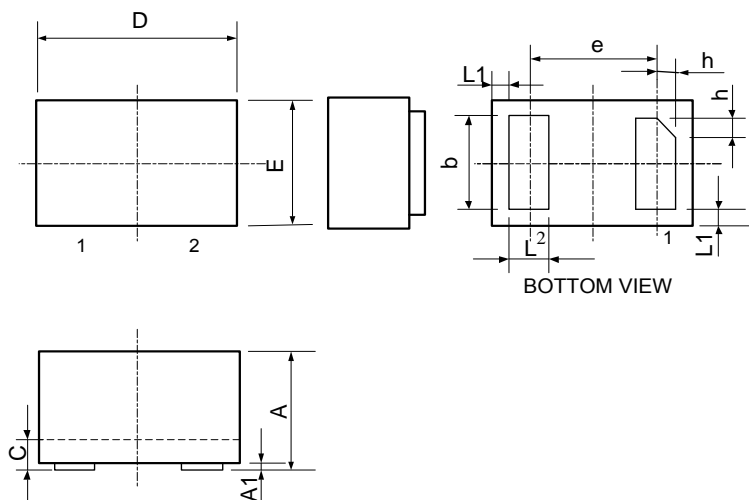
**Figure 3. Pulse Waveform-8/20 μs**



**Figure 4. Pulse Waveform-ESD (IEC61000-4-2)**

**Package Outline Dimensions**

**DFN1006**



SYMBOL	MILIMETER		
	MIN	NOM	MAX
A	0.45	0.50	0.55
A1	0.00	0.02	0.05
b	0.45	0.50	0.55
C	0.12	0.15	0.18
D	0.95	1.00	1.05
e	0.65BSC		
E	0.55	0.60	0.65
L	0.20	0.25	0.30
L1	0.05REF		
h	0.07	0.12	0.17

**Order Information**

Device	Package	Marking	Carrier	Quantity	HSF Status
GSEZ7B300	DFN1006	D8	Tape & Reel	10000pcs/Reel	RoHS compliant