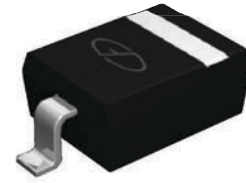
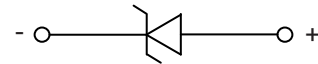


Features

- 450W peak pulse power per line ($T_P=8/20\mu s$)
- SOD-323 package
- Fast response time, typically < 1 ns
- Excellent clamping voltage
- Low leakage current
- IEC 61000-4-2 $\pm 30kV$ (Air) ESD protection
- IEC 61000-4-2 $\pm 30kV$ (Contact) ESD protection
- IEC 61000-4-4 40A (5/50ns) EFT protection
- RoHS compliant



SOD-323



Schematic Diagram

Applications

- Laptop computers
- Cellular phones
- Digital cameras
- PDAs

Absolute Maximum Ratings ($T_A=25^\circ C$ unless otherwise specified)

Parameter	Symbol	Value	Unit
Peak Pulse Power ($T_P=8/20\mu S$)	P_{PP}	450	W
Peak Pulse Current ($T_P=8/20\mu S$)	I_{PP}	5	A
Junction Temperature	T_J	-55 To +150	$^\circ C$
Storage Temperature	T_{STG}	-55 To +150	$^\circ C$

Electrical Characteristics ($T_A=25^\circ C$ unless otherwise specified)

Parameter	Symbol	Conditions	Min.	Typ.	Max.	Unit
Reverse Stand-Off Voltage	V_{RWM}	-	-	-	36	V
Reverse Breakdown Voltage	V_{BR}	$I_T=1mA$	40	-	-	V
Reverse Leakage Current	I_R	$V_{RWM}=36V$	-	-	1	μA
Clamping Voltage	V_C	$I_{PP}=4A, T_P=8/20\mu S$	-	-	60	V
Junction Capacitance	C_J	$V_R=0V, f=1MHz$	-	25	-	pF

Typical Characteristic Curves

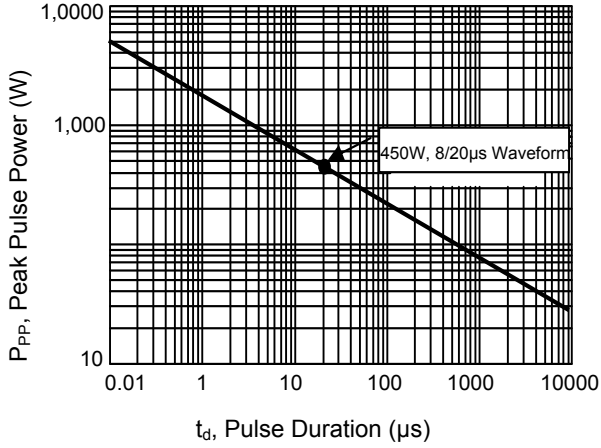


Figure 1. Peak Pulse Power vs. Pulse Time

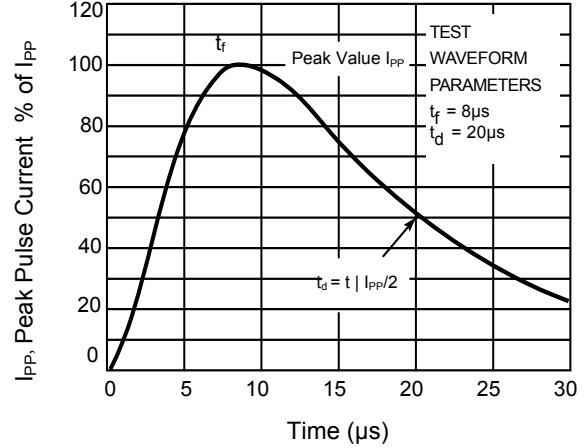


Figure 2. Pulse Waveform-8/20μs

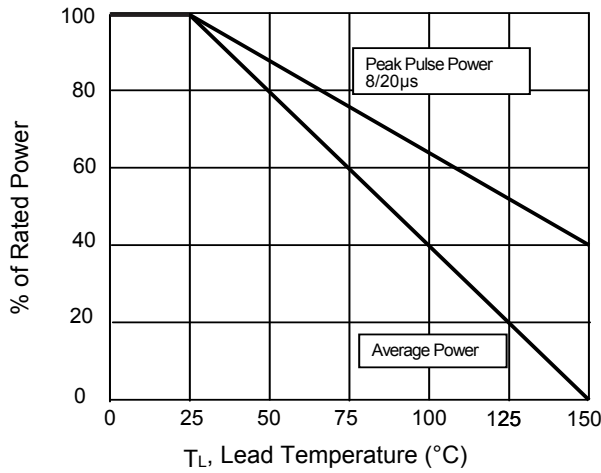


Figure 3. Power Derating Curve

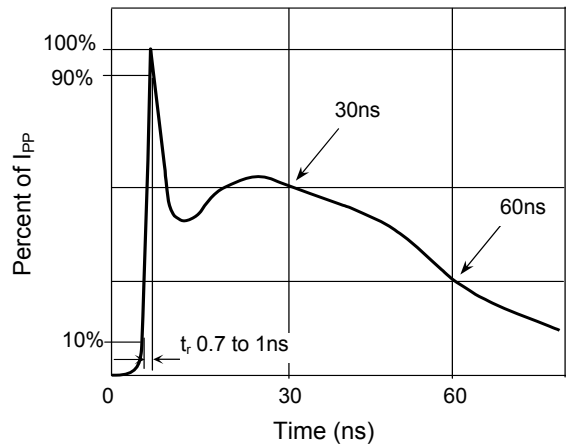
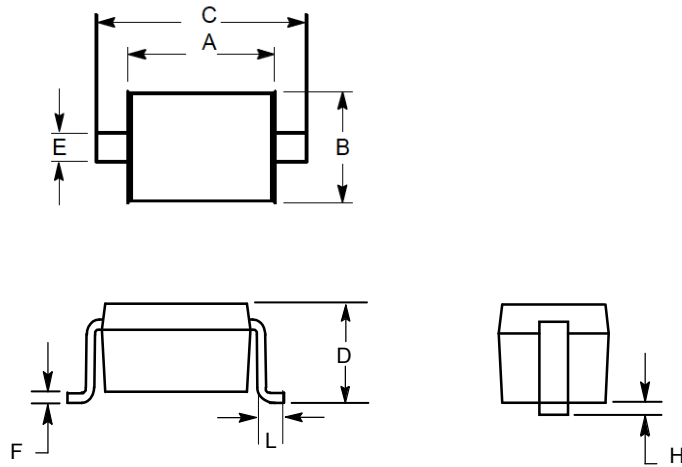


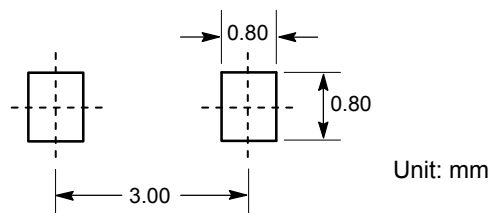
Figure 4. Pulse Waveform-ESD (IEC61000-4-2)

Package Outline Dimensions (SOD-323)



Symbol	Dimensions In Millimeters		Dimensions In Inches	
	Min.	Max.	Min.	Max.
A	1.60	1.90	0.063	0.075
B	1.15	1.45	0.045	0.057
C	2.39	2.70	0.094	0.106
D	0.80	1.10	0.031	0.043
E	0.25	0.40	0.010	0.016
F	0.10	0.20	0.004	0.008
H	-	0.10	-	0.004
L	0.20	-	0.008	-

Recommended Pad Layout



Order Information

Device	Package	Marking	Carrier	Quantity
GSEDC36U025	SOD-323	36W	Tape & Reel	3,000pcs / Reel

For more information, please contact us at: inquiry@goodarksemi.com