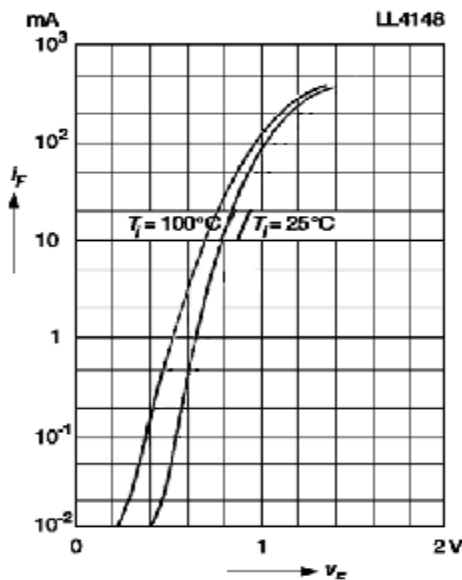


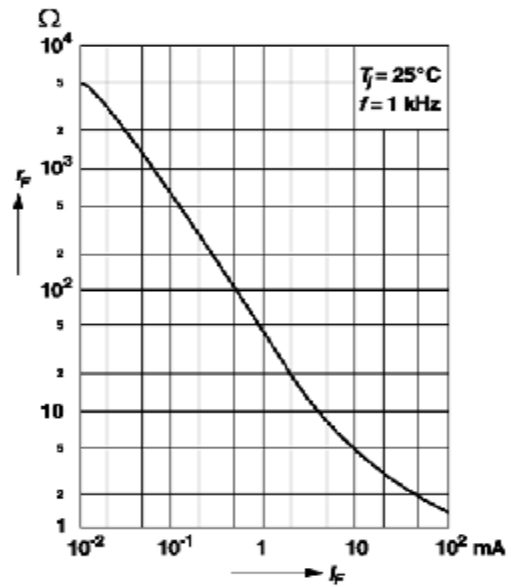


## Typical Characteristic Curves

Forward characteristics

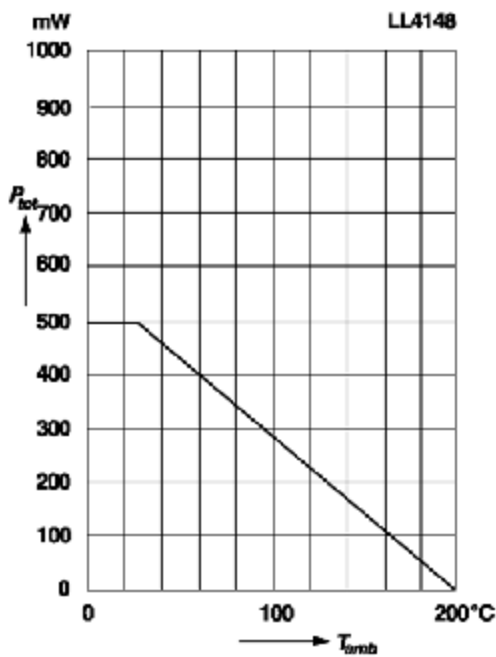


Dynamic forward resistance versus forward current

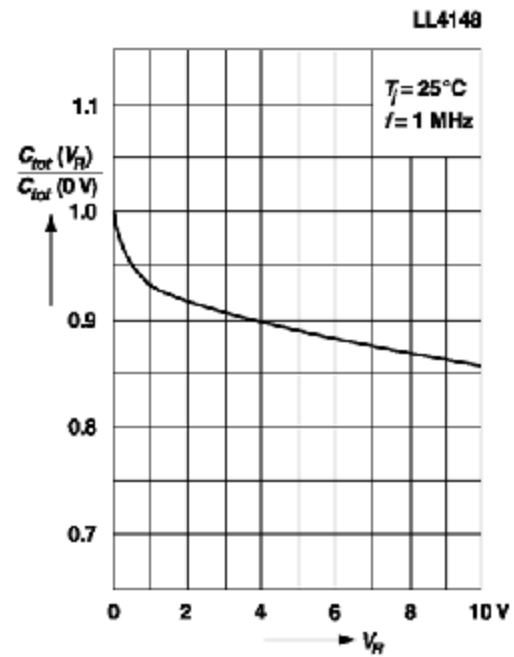


Admissible power dissipation versus ambient temperature

Valid provided that electrodes are kept at ambient temperature

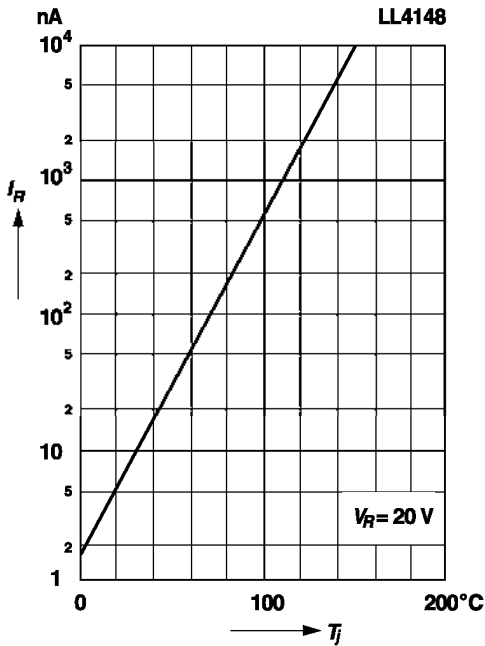


Relative capacitance versus reverse voltage

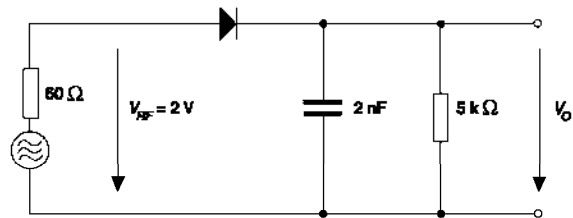


## Typical Characteristic Curves

Leakage current  
versus junction temperature



Rectification Efficiency Measurement Circuit



Admissible repetitive peak forward current versus pulse duration

Valid provided that electrodes are kept at ambient temperature

