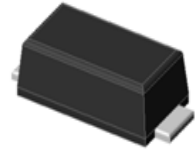


Features

- Low forward voltage schottky rectifier
- SOD-323F thin SMD package
- RoHS compliant / Green EMC
- Matte tin (Sn) lead finish
- Cathode band / Device marking



RoHS
COMPLIANT



eSGP (SOD-323F)



Schematic Diagram

Absolute Maximum Ratings (T_A=25°C unless otherwise specified)

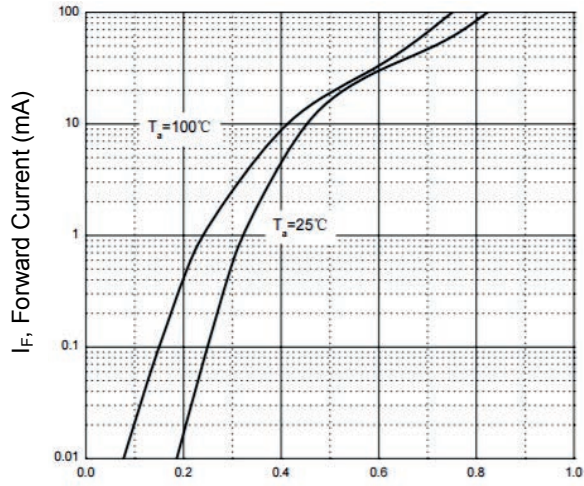
Parameter	Symbol	Value	Unit
Repetitive Peak Reverse Voltage	V _{RRM}	40	V
DC Blocking Voltage	V _{DC}	30	V
Continuous Forward Current	I _O	30	mA
Non-Repetitive Peak Forward Current ¹	I _{FSM}	0.2	A
Power Dissipation	P _D	200	mW
Junction Temperature	T _J	125	°C
Storage Temperature	T _{STG}	-55 to +125	°C

Note: 1. 8.3ms single half sine-wave.

Electrical Characteristics (T_A=25°C unless otherwise specified)

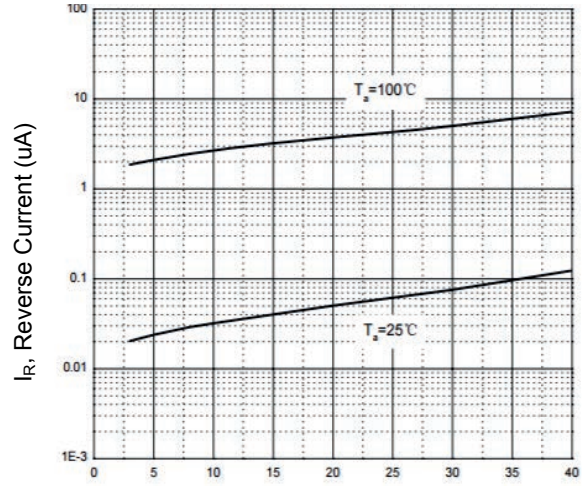
Parameter	Symbol	Conditions	Min	Typ	Max	Unit
Forward Voltage	V _F	I _F =1mA	-	-	0.37	V
Reverse Current	I _R	V _R =30V	-	-	0.5	μA
Capacitance	C	V _R =1V, F=1MHz	-	2	-	pF

Typical Characteristics



V_F , Forward Voltage (V)

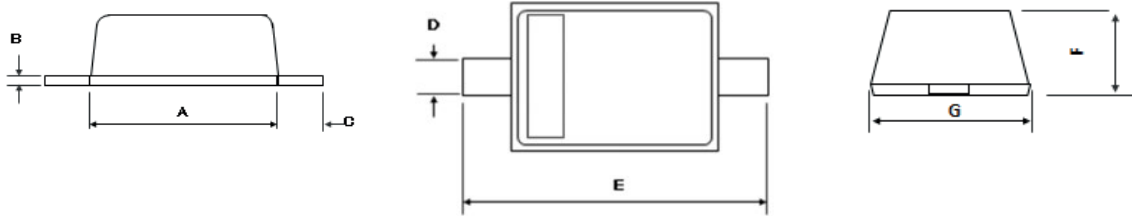
Figure 1. Forward Characteristics



V_R , Reverse Voltage (V)

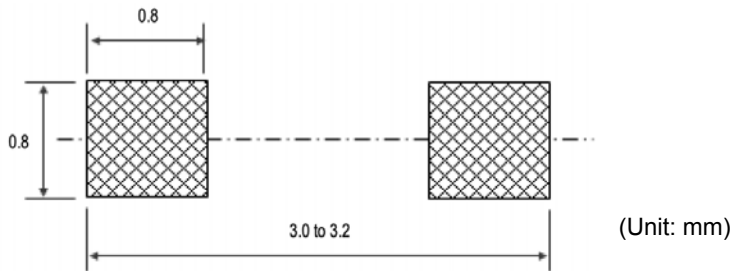
Figure 2. Reverse Characteristics

Package Outline Dimension (SOD-323F)



Symbol	Dimensions In Millimeters		Dimensions In Inches	
	Min	Max	Min	Max
A	1.600	1.800	0.063	0.071
B	0.060	0.210	0.002	0.008
C	0.300	0.500	0.012	0.020
D	0.250	0.400	0.010	0.016
E	2.300	2.700	0.091	0.106
F	0.600	0.750	0.024	0.030
G	1.150	1.350	0.045	0.053

Recommended Pad Layout



Order Information

Device	Package	Marking	Carrier	Quantity
GSK03DF40	SOD-323F	C9	Tape & Reel	3,000 pcs / 7" Reel