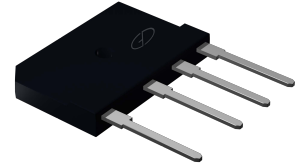


Features

- High Surge Current Capability
- Glass Passivated Chip Junction



Package: GBJ (5S)

Mechanical Data

- Case: GBJ(5S) Molded plastic body
- Terminals: Plated leads solderable per MIL-STD-750, Method 2026
- High temperature soldering guaranteed: 260°C/10 seconds, 0.375 (9.5mm) lead length, 5lbs.(2.3kg) tension
- Mounting Position: Any⁽³⁾

Maximum Ratings and Electrical Characteristics

(T_A=25°C unless otherwise noted)

Parameter	Symbol	GBJ35J	GBJ35K	GBJ35M	Unit
Maximum Repetitive Peak Reverse Voltage	V _{RRM}	600	800	1000	V
Maximum RMS Voltage	V _{RMS}	420	560	700	V
Maximum DC Blocking Voltage	V _{DC}	600	800	1000	V
Maximum Average Forward Rectified Output Current at T _C =98°C T _A =25°C	I _{F(AV)}	35 ⁽¹⁾ 3.8 ⁽²⁾			A
Peak Forward Surge Current Single Sine-wave Superimposed on Rated Load (JEDEC Method)	I _{FSM}	450			A
Rating for Fusig (t<8.3ms)	I ² t	840			A ² sec
Maximum Instantaneous Forward Voltage Drop Per Leg at 17.5A	V _F	1.05			V
Maximum DC Reverse Current at Rated DC Blocking Voltage Per Leg T _A =25°C T _A =125°C	I _R	5 150			μA
Typical Thermal Resistance Per Leg	R _{θJA} R _{θJC}	22 ⁽²⁾ 1.5 ⁽¹⁾			°C/W
Dielectric Strength (Terminals to case, AC 1 minute)	V _{dis}	2500			V
Operating Junction Temperature Range	T _J	-55 to +150			°C
Storage Temperature Range	T _{STG}	-55 to +150			°C

Notes:

(1) Unit case mounted on AL plate heatsink

(2) Unit mounted on P.C.B.without Heatsink

(3)Recommended mounting position is to bolt down on heatsink with silicone thermal compound for maximum heat transfer with #6 screw.

Typical Charateristic Curves

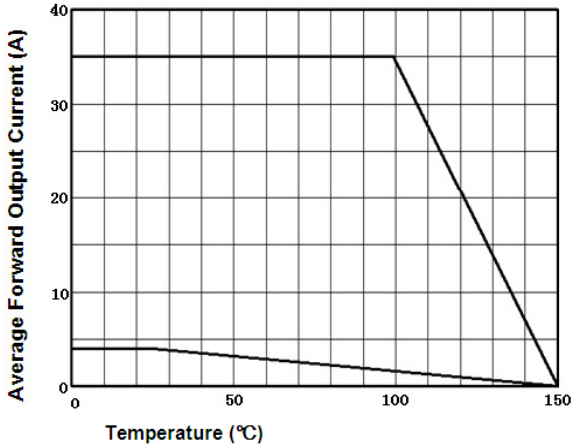


Figure 1. Derating Curve Output Rectified Current

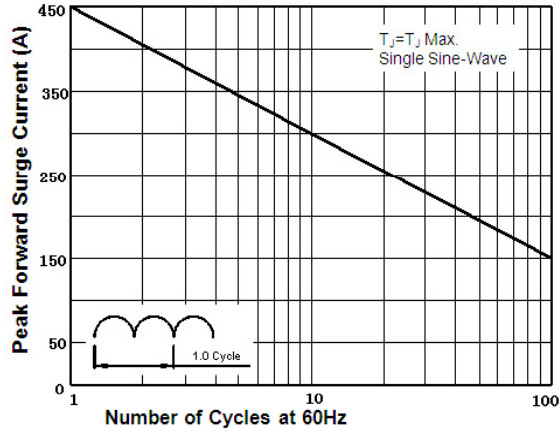


Figure 2. Maximum Non-Repetitive Peak Forward Surge Current per Diode

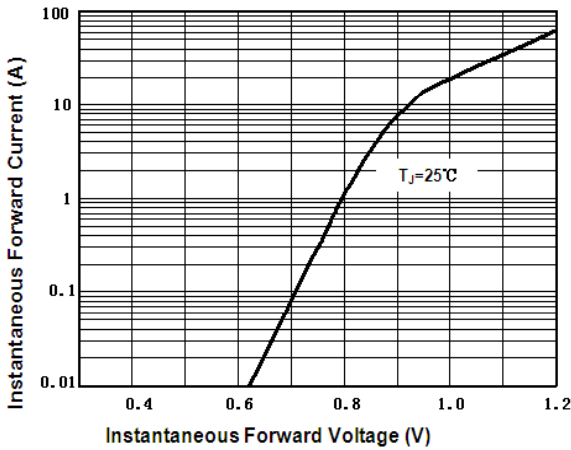


Figure 3. Typical Forward Characteristics Per Diode

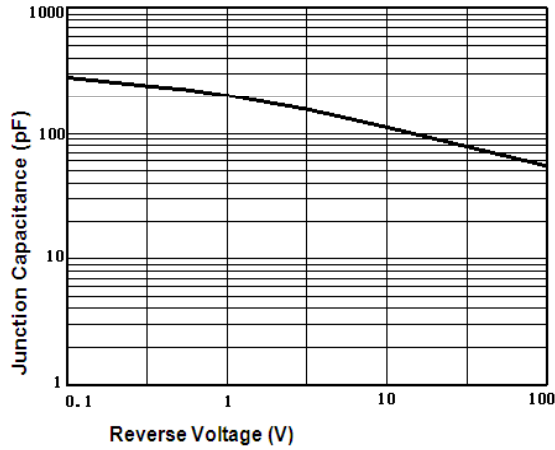


Figure 4. Typical Junction Capacitance Per Diode

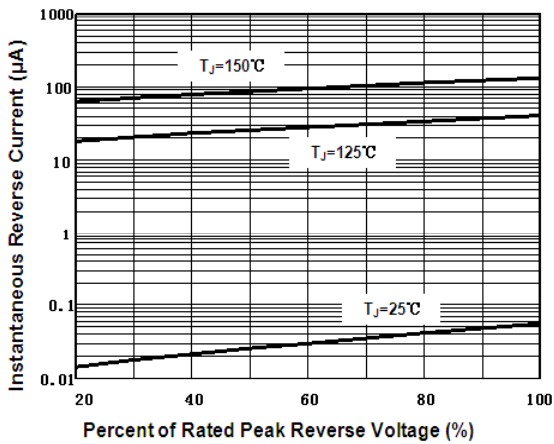


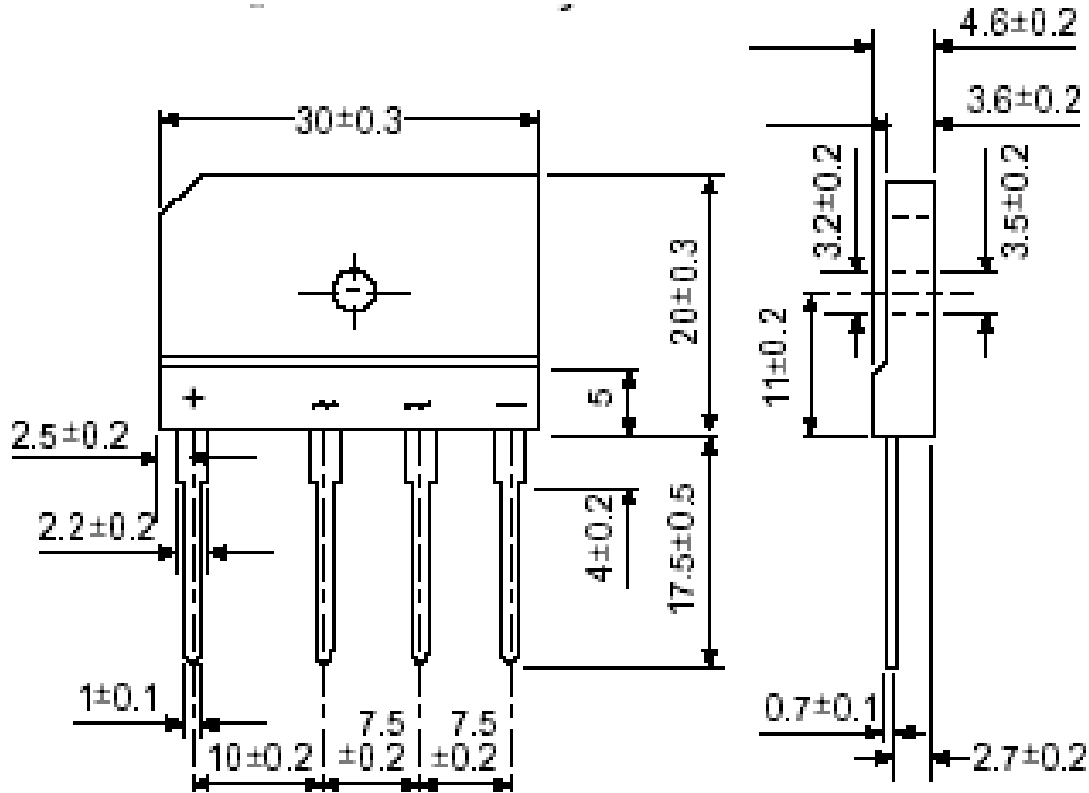
Figure 5. Typical Reverse Characteristics Per Diode

GBJ35J thru GBJ35M

Glass Passivated Single-Phase Bridge Rectifier
 Reverse Voltage 600V - 1000V Forward Current 35A

Package Outline Dimensions

GBJ (5S)



Dimensions in millimeters